



DF Fan Services, Inc.  
495 Wegner Drive  
West Chicago, IL 60185  
Phone: 630/876-1495  
Fax: 630/876-1497  
e-mail: [dffan@dffan.com](mailto:dffan@dffan.com)  
home page: <http://www.dffan.com>

DF Fan Services, Inc. manufactures the forward curved fan lines originally designed and formerly manufactured by the "Clarage Fan Company".

One of these product lines is the "**Clarage Type HV Multiblade Fans**" sometimes known as Spider fans due to the fan wheel hubs.

Replacement parts are available for sizes ½ through 2-1/2.

Replacement parts are NOT available for sizes 2-3/4 through 9

This attached catalog contains performance and dimensional information on the complete product line

Please contact us at the above numbers if you have any questions.

# TYPE HV Multiblade Fans

## FEATURES

1. High efficiency with low operating speeds.
2. Silent in operation.
3. Built in a large range of sizes and arrangements to meet every ventilation and air conditioning requirement.

## APPLICATION

Type HV Fans are recommended for ventilating and air conditioning services where slow speed, extremely quiet performance is required.

They are especially well suited to installations where the available equipment space is limited. The slow speed characteristic of the Type HV makes possible the use of smaller fans at higher outlet velocities than would be considered advisable with other types for any given noise level.

Type HV Fans are also available in special constructions for light-duty induced draft service.

## DESIGN

**Slow Speeds** — For a given performance requirement, the Type HV Fan operates at lower speeds than any other type. Due to this speed characteristic, this type of fan is not suitable for direct connection to motors except in the smaller sizes. However, modern, efficient V-belt drives permit the use of low-cost, quiet, high-speed motors with these fans, thus insuring low initial cost, without sacrificing slow operating speeds.

**Quiet Operation** — Because of the slow speed characteristic, these fans, when properly selected and installed, offer the ultimate in quiet operation.

**Efficiency** — Type HV Fans are designed for high efficiency in the range of performances required on modern ventilating and air conditioning systems.

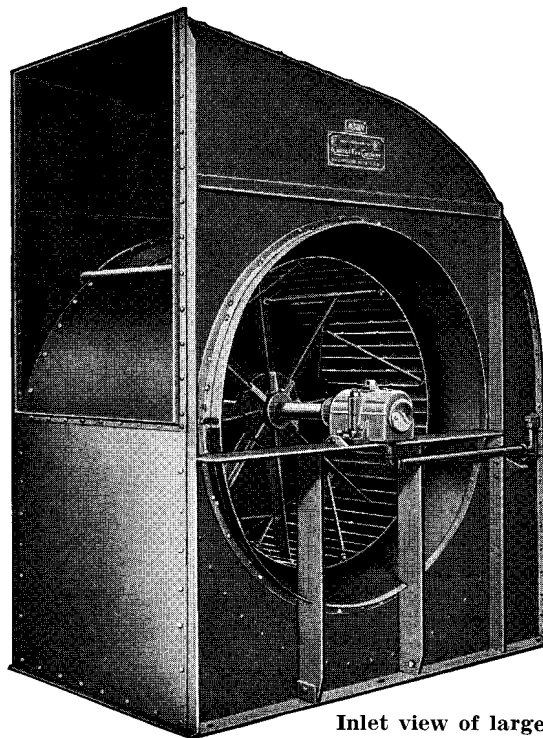
## CONSTRUCTION

**Wheels** — The Type HV wheel consists of a large number of shallow steel blades securely riveted to side rims and/or backplate. Wheels in sizes  $1\frac{3}{4}$  and smaller are of the backplate type with a cast iron hub securely riveted to the heavy gauge backplate. The larger sizes are of the central spider type. The wheel spider, consisting of steel T-arms in a heavy cast iron hub, is cast in an accurately machined metal flask which locates the arms equidistant and in a true plane.

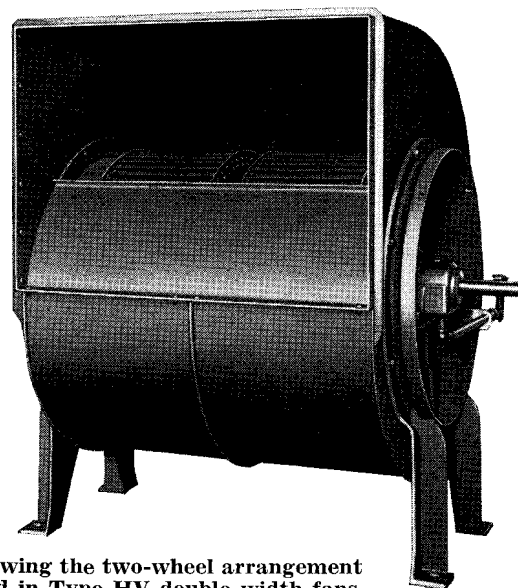
The wheel rims are extra heavy to insure rigid support to the blades, and, in sizes  $3\frac{1}{4}$  and larger, the wheels are braced by diagonal rods running from spider to rim. This bracing handles all shock and inertia loads safely. Every wheel is carefully balanced both statically and dynamically, assuring freedom from vibration.

**Housings (Sizes  $\frac{1}{2}$  through 3)** — The two smallest sizes of Type HV Fans are furnished with cast iron housings. All other of these smaller size fans are regularly furnished with steel housings, although cast iron housings are available in certain of the smaller sizes to meet special requirements.

Steel housings feature an air-tight, lock seam joint between the sides and scroll sheet. Where building openings will not permit entrance of a one-piece housing, fans can be constructed with the scroll sheet bolted to the sides for a slight additional charge so that the housing can be knocked down.



Inlet view of large Type HV Fan, Arrangement 3.



Showing the two-wheel arrangement used in Type HV double width fans.

All Type HV Fans in these smaller sizes have heavy cast iron sideplates, which support the housing and bearings, and which are attached to the fan housing with eight equally spaced tap bolts. This construction permits simple in-field adjustment of the housing to any of the eight standard discharges. In addition, the central spider type wheel, which is standard on sizes 1½ and larger, is completely symmetrical and can be used for either rotation.

**Housings (Sizes 3¼ through 9)** — Larger size Type HV Fans have heavy gauge all steel housings which are rigidly braced with angles. Bearing supports, as well as the side sheets, extend to base angles at the floor.

The scroll sheet is bolted to the side sheets, permitting knocked down shipment if required; and, on the largest sizes, side sheets are split to facilitate handling.

Although this type construction does not permit changes of discharge in the field, these larger fans can be built for any required discharge as ordered. Change of rotation is possible, however, since a completely symmetrical central spider type wheel is standard on these fans.

## DOUBLE WIDTH FANS

As illustrated at the bottom of page 2, the rotating assembly for Type HV double width fans is composed of two single width wheels mounted on a single shaft. For double width applications, the central spider type wheels are provided with backplates to prevent the short circuiting of air between the two wheels. Because each wheel can be moved independently on the shaft, this arrangement simplifies the adjustment of wheels to inlets for proper clearance.

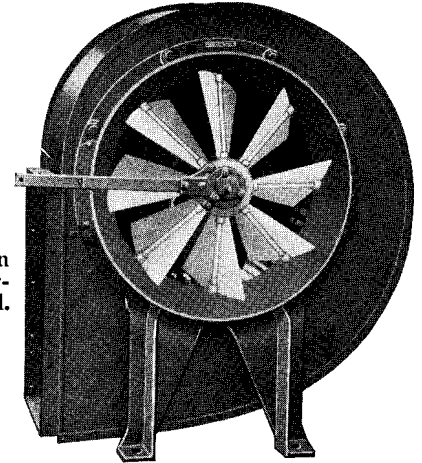
## BEARINGS

Type HV Fans are regularly furnished with Clarage babbitted ring oiled sleeve bearings, except in Arrangement 2. This arrangement, as illustrated on the right, is furnished with ball bearings as standard, although sleeve bearings are available on certain smaller fan sizes. Any Type HV Fan can be equipped with ball bearings if required and specified on order.

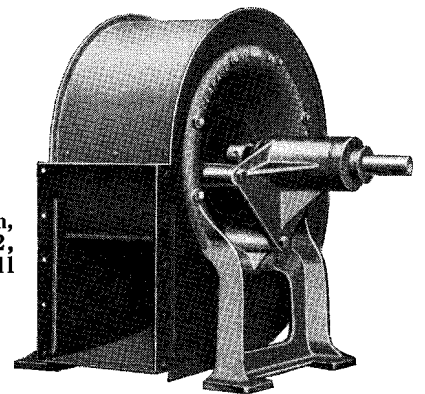
## VORTEX CONTROL

Any Type HV Fan can be furnished with Clarage Vortex Control, shown above right and on the front cover. This device, consisting of a number of adjustable blades

arranged in the fan inlet, should be used wherever it is necessary to change periodically or continually the volume of air delivered by the fan. It is a means of achieving any desirable capacity regulation — with the fan operating at constant speed — which has the low first cost of damper control, and at the same time the efficient performance of costly variable speed control. See Clarage Bulletin 122-A for full details.

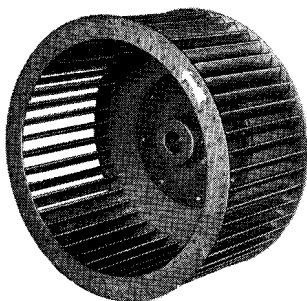


Small Type HV Fan equipped with Clarage Vortex Control.

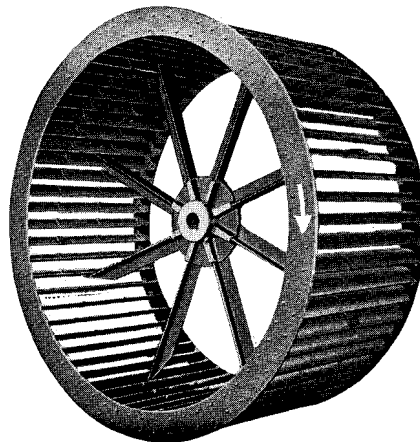


Small Type HV Fan, Arrangement 2, equipped with ball bearings.

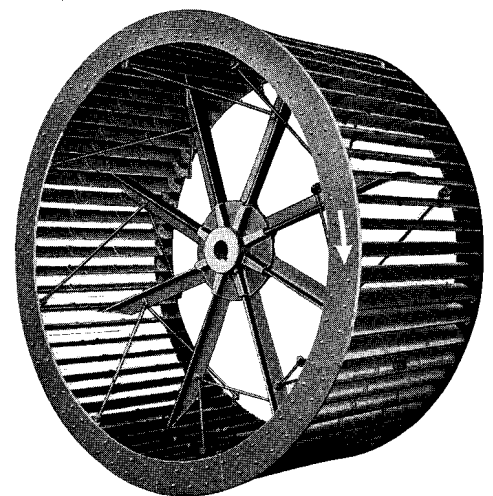
## TYPE HV WHEELS



Backplate type wheel used in Type HV Fans, sizes ½ through 1¾.



Spider type wheel used in Type HV Fans, sizes 1½ through 3.



Spider type wheel with brace rods for Type HV Fans, sizes 3¼ through 9.

# GENERAL DATA FOR TYPE HV FANS

## SINGLE WIDTH FANS—N.A.F.M. Arrangements 3, 2 and 1

Size of Fan	Size of Outlet	Outside Diam. of Inlet	Extreme Dimensions for Full Housed Top Horizontal Discharge Fans						Wheel		Std. Pulley		Bearing Size			Weight in Pounds			Size of Fan
			Height	Length	Width			Diam.	Width	Diam.	Width	Arr. 3	Arr. 2	Arr. 1	Arr. 3	Arr. 2	Arr. 1		
					Arr. 3	Arr. 2	Arr. 1												
1/2	6 diam.	6 1/2	14 1/8	12 1/2		19 1/4		6 1/2	3	3	3		3/4	1 1/8		55	60	1/2	
5/8	7 1/2 diam.	8 1/8	17 1/8	14 1/8		20 1/8		8 1/8	3 3/4	4	3		3/4	1 1/8		70	95	5/8	
3/4	7 1/2 x 9 3/4	9 3/4	21	17		22 3/8	23 1/2	9 3/4	4 1/2	5	3		3/4	1 1/8		80	130	3/4	
7/8	8 3/4 x 11 3/8	11 3/8	24 3/8	19 3/8		25 1/8	27 3/8	11 3/8	6	5	3		1	1 1/8		100	160	7/8	
1	10 x 13	13	27 3/4	21 3/4		26 3/8	28	13	6	6	4		1	1 1/8		130	180	1	
1 1/8	11 1/4 x 14 3/8	14 3/8	31 1/8	24 1/8		28 1/8	32 3/4	14 3/8	7 1/2	6	4		1 1/8	1 1/8		175	220	1 1/8	
1 1/4	12 3/8 x 16 1/8	16 1/8	34 3/8	26 3/8		30 1/8	34 3/8	16 1/4	7 1/2	7	4		1 1/8	1 1/8		200	285	1 1/4	
1 3/8	13 3/8 x 17 3/8	18	37 3/8	29	31 3/4	27	39 3/8	17 3/8	8 1/4	8	4	1 1/8	1 1/8	1 1/8	200	235	335	1 3/8	
1 1/2	14 3/8 x 19 1/4	20 1/4	40 3/4	31 3/8	26 3/4	26 3/8	36 1/2	19 1/2	9	8	4	1 1/8	1 1/8	1 1/8	295	260	390	1 1/2	
1 3/4	17 1/4 x 22 1/2	23 3/4	47	36 3/8	30	30 1/8	42	22 3/4	10 1/2	10	4	1 1/8	1 1/8	1 1/8	420	355	475	1 3/4	
2	19 3/4 x 25 3/8	27	53 3/8	41 3/8	33 3/4	34 3/8	45	26	12	14	5	1 1/8	1 1/8	1 1/8	510	480	570	2	
2 1/4	22 1/8 x 28 3/4	30 3/8	59 3/4	45 1/8	37 1/2	37 3/8	50 3/4	29 1/4	13 1/2	16	5	1 1/8	1 1/8	1 1/8	690	600	760	2 1/4	
2 1/2	24 3/8 x 32	34	66	50 1/8	40 1/2	39 3/8	53 3/4	32 1/2	15	18	5	1 1/8	1 1/8	1 1/8	840	730	950	2 1/2	
2 3/4	27 x 35 3/8	37 3/8	72 3/8	55 3/8	44 1/2	45 3/8	58	35 3/4	18	20	6	1 1/8	1 1/8	1 1/8	1120	900	1175	2 3/4	
3	29 1/2 x 38 3/8	40 3/4	78 3/8	60 3/4	46 1/2	46 3/8	62 1/4	39	18	22	6	1 1/8	1 1/8	1 1/8	1210	1075	1400	3	
3 1/4	32 1/8 x 41 3/4	44	76 3/8	63 3/4	57 3/8		70	42 1/4	19 1/2	24	6	2 1/8		2 1/8	1450		1600	3 1/4	
3 1/2	34 1/2 x 45	47 1/2	81 1/8	68 3/4	59 3/4		72	45 1/2	21	28	6	2 1/8		2 1/8	1700		1800	3 1/2	
4	39 3/8 x 51 1/4	54 1/2	93 3/8	78 3/8	65 1/2		77 3/4	52	24	36	7	2 1/8		2 1/8	2150		2200	4	
4 1/2	44 1/4 x 57 3/8	61	104 3/8	87 3/8	70 1/2		82 1/2	58 1/2	27	42	7	2 1/8		2 1/8	2620		2875	4 1/2	
5	49 3/8 x 64	68	116 3/8	97 3/8	78		96 1/4	65	30	48	8	2 1/8		2 1/8	3250		3700	5	
5 1/2	54 3/8 x 70 1/2	75	128	107 3/8	83 1/2		99 1/2	71 1/2	33	54	8	3 1/8		3 1/8	3960		4350	5 1/2	
6	59 x 76 3/4	81 1/2	139	116 3/8	92 1/2		112 1/4	78	36	62	10	3 1/8		3 1/8	4970		5000	6	
6 1/2	63 3/8 x 83 3/8	88 1/2	151 1/8	126 3/4	98 1/4		119 1/4	84 1/2	39	68	10	3 1/8		3 1/8	6400		6500	6 1/2	
7	68 3/8 x 89 1/2	95	162 3/4	135 3/4	105		130 1/4	91	42	74	12	3 1/8		4 1/8	6900		7400	7	
7 1/2	73 3/8 x 95 3/8	102	173 3/8	145 3/8	111 1/2		136 1/2	97 1/2	45	80	12	4 1/8		4 1/8	8800		9500	7 1/2	
8	78 1/2 x 102 1/4	109	184 3/8	154 3/8	118 1/4		148	104	48	86	14	4 1/8		4 1/8	10000		10600	8	
8 1/2	83 1/2 x 108 3/4	116	197 1/8	165 3/8	127 1/4		166	110 1/2	51 1/4	92	16	4 1/8		5 1/8	12000		12600	8 1/2	
9	88 3/8 x 115	122	209 1/8	174 3/8	134		180	117	54 1/4	98	18	4 1/8		5 1/8	14000		14800	9	

## DOUBLE WIDTH FANS—N.A.F.M. Arrangement 3

Size of Fan	Size of Outlet	Outside Diam. of Inlet	Extreme Dimensions for Full Housed Top Horizontal Discharge Fans			One Wheel		Standard Pulley		Bearing Size	Weight in Pounds	Size of Fan
			Height	Length	Width	Diam.	Width	Diam.	Width			
1 3/8	24 3/8 x 17 5/8	18	37 5/8	29	28	17 3/8	8 1/4	8	5	1 1/8	450	1 3/8
1 1/2	26 3/8 x 19 1/4	20 1/4	40 3/4	31 3/8	39 3/8	19 1/2	9	8	5	1 1/8	520	1 1/2
1 3/4	31 x 22 1/2	23 3/4	47	36 3/8	43 3/8	22 3/4	10 1/2	10	5	1 1/8	580	1 3/4
2	35 3/8 x 25 3/8	27	53 3/8	41 3/8	49 3/8	26	12	14	6	1 1/8	830	2
2 1/4	39 3/8 x 28 3/4	30 3/8	59 3/4	45 1/8	54 3/8	29 1/4	13 1/2	16	6	1 1/8	1050	2 1/4
2 1/2	44 3/8 x 32	34	66	50 1/8	60 3/8	32 1/2	15	18	7	1 1/8	1300	2 1/2
2 3/4	48 1/2 x 35 3/8	37 3/8	72 3/8	55 3/8	66	35 3/4	18	20	8	1 1/8	1450	2 3/4
3	52 3/8 x 38 3/8	40 3/4	78 3/8	60 3/4	70 3/8	39	18	22	8	1 1/8	1820	3
3 1/4	57 1/2 x 41 3/4	44	76 3/8	63 3/4	83	42 1/4	19 1/2	24	8	2 1/8	2160	3 1/4
3 1/2	61 3/8 x 45	47 1/2	81 1/8	68 1/2	88	45 1/2	21	28	8	2 1/8	2500	3 1/2
4	70 3/8 x 51 1/4	54 1/2	93 3/8	78 3/8	99 1/2	52	24	36	10	2 1/8	3150	4
4 1/2	79 3/8 x 57 3/8	61	104 3/8	87 3/8	109 1/4	58 1/2	27	42	10	2 1/8	3920	4 1/2
5	88 3/8 x 64	68	116 3/8	97 3/8	120 3/8	65	30	48	12	3 1/8	4600	5
5 1/2	97 x 70 1/2	75	128	107 3/8	131	71 1/2	33	54	12	3 1/8	6200	5 1/2
6	105 3/8 x 76 3/4	81 1/2	139	116 3/8	142 1/4	78	36	62	14	3 1/8	7740	6
6 1/2	114 3/8 x 83 1/8	88 1/2	151 1/8	126 3/4	154 3/4	84 1/2	39	68	16	4 1/8	9400	6 1/2
7	123 1/2 x 89 1/2	95	162 3/4	135 3/4	163 1/2	91	42	74	18	4 1/8	11200	7
7 1/2	132 3/8 x 95 3/8	102	173 3/8	145 3/8	177 3/8	97 1/2	45	80	20	4 1/8	13000	7 1/2
8	141 x 102 1/4	109	184 3/8	154 3/8	189	104	48	86	22	5 1/8	17000	8
8 1/2	149 3/8 x 108 3/4	116	197 1/8	165 3/8	202 3/4	110 1/2	51 1/4	92	24	5 1/8	21000	8 1/2
9	158 3/8 x 115	122	209 1/8	174 3/8	217 3/4	117	54 1/4	98	26	6 1/8	26000	9

NOTE: All Dimensions given in both tables are in inches.













# Capacities of Clearance Type HV Fans

No. 2 Type HV Fan, Single Width, Single Inlet

Volume C. F. M.	Outlet Velocity Feet per Min.	¼" S. P.		⅓" S. P.		½" S. P.		⅔" S. P.		1" S. P.		1¼" S. P.		1½" S. P.		1¾" S. P.		2" S. P.		2½" S. P.		3" S. P.		
		R.	B.	R.	B.	R.	B.	R.	B.	R.	B.	R.	B.	R.	B.	R.	B.	R.	B.	R.	B.	R.	B.	
		P. M.	H. P.	P. M.	H. P.	P. M.	H. P.	P. M.	H. P.	P. M.	H. P.	P. M.	H. P.	P. M.	H. P.	P. M.	H. P.	P. M.	H. P.	P. M.	H. P.	P. M.	H. P.	
3,440	1000	226	26	255	33	294	50	324	59	356	68	382	76	411	83	441	94	460	104	486	131	507	156	
3,784	1100	235	32	266	42	301	56	330	66	358	76	382	82	411	94	441	104	460	114	486	142	507	180	
4,128	1200	245	38	275	49	310	61	340	73	370	82	395	94	425	104	455	114	480	124	507	152	528	200	
4,472	1300	255	47	283	56	319	71	358	82	387	95	417	104	444	114	474	124	490	134	517	162	544	210	
4,816	1400	268	56	292	63	325	78	368	94	404	104	434	114	464	124	494	134	517	144	544	180	570	220	
5,160	1500	279	64	305	73	335	83	378	104	414	114	444	124	474	134	504	144	528	154	557	190	580	230	
5,504	1600	291	73	316	87	343	95	380	114	424	124	454	134	484	144	514	154	538	164	567	200	600	240	
5,848	1700	304	83	329	97	350	107	397	124	434	134	464	144	494	154	524	164	548	174	577	210	610	250	
6,192	1800	318	1.00	341	1.12	360	1.21	378	1.33	397	1.47	414	1.62	433	1.73	453	1.88	463	2.00	470	2.18	486	250	
6,536	1900	...	...	353	1.26	371	1.38	388	1.50	408	1.64	424	1.76	444	1.93	456	2.04	463	2.18	475	2.38	486	260	
6,880	2000	...	...	363	1.44	382	1.56	398	1.69	419	1.81	437	1.97	455	2.08	472	2.20	479	2.38	486	2.58	499	260	
7,224	2200	...	...	...	...	408	1.99	423	2.07	441	2.24	456	2.35	472	2.52	482	2.62	486	2.76	499	3.07	507	270	
8,256	2400	...	...	...	...	433	2.42	448	2.55	467	2.73	477	2.85	492	3.04	518	3.15	528	3.28	538	3.58	544	280	
8,944	2600	...	...	...	...	...	...	470	3.11	489	3.35	497	3.45	511	3.62	539	3.73	548	3.82	552	4.07	557	290	
9,632	2800	...	...	...	...	...	...	...	...	511	4.05	521	4.15	536	4.32	562	4.42	568	4.57	578	4.87	588	300	
10,320	3000	...	...	...	...	...	...	...	...	...	...	544	4.70	558	4.88	585	5.04	596	5.15	607	5.38	607	310	
11,008	3200	...	...	...	...	...	...	...	...	...	...	568	5.70	588	5.08	610	5.28	628	5.38	632	5.67	632	320	
11,696	3400	...	...	...	...	...	...	...	...	...	...	...	614	6.14	636	6.30	656	6.43	656	6.73	687	6.87	686	330

No. 2 Type HV Fan, Double Width, Double Inlet

Volume C. F. M.	Outlet Velocity Feet per Min.	¼" S. P.		⅓" S. P.		½" S. P.		⅔" S. P.		1" S. P.		1¼" S. P.		1½" S. P.		1¾" S. P.		2" S. P.		2½" S. P.		3" S. P.	
		R.	B.	R.	B.	R.	B.	R.	B.	R.	B.	R.	B.	R.	B.	R.	B.	R.	B.	R.	B.	R.	B.
		P. M.	H. P.	P. M.	H. P.	P. M.	H. P.	P. M.	H. P.	P. M.	H. P.	P. M.	H. P.	P. M.	H. P.	P. M.	H. P.	P. M.	H. P.	P. M.	H. P.	P. M.	H. P.
6,880	1110	229	.55	262	.69	298	1.05	329	1.24	361	1.43	388	1.74	417	2.04	467	2.75	507	3.49	515	4.20	552	5.44
7,568	1230	239	.67	270	1.03	306	1.18	335	1.39	368	1.79	392	1.97	427	2.18	477	2.90	532	3.78	544	4.58	552	5.73
8,256	1330	249	.80	279	1.33	324	1.49	343	1.72	373	2.00	396	2.18	417	2.48	467	3.19	544	4.07	557	4.94	552	6.00
8,944	1440	259	.99	287	1.18	312	1.34	339	1.53	368	1.79	392	1.97	427	2.18	477	2.90	532	3.78	544	4.58	552	6.15
9,632	1550	272	1.18	298	1.32	324	1.49	343	1.72	373	2.00	396	2.18	417	2.48	467	3.19	544	4.07	557	4.94	552	6.30
10,320	1680	283	1.34	310	1.53	330	1.74	355	1.97	380	2.18	399	2.38	423	2.69	467	3.49	552	4.20	560	5.29	552	6.45
11,008	1775	295	1.53	321	1.83	343	2.00	365	2.18	388	2.48	406	2.69	434	2.90	470	3.49	552	4.20	560	5.80	552	6.60
11,696	1885	309	1.85	334	2.04	353	2.25	373	2.48	395	2.75	413	2.98	432	3.28	470	3.78	544	4.58	552	6.15	552	6.75
12,384	2000	323	2.10	346	2.35	365	2.54	384	2.79	403	3.09	420	3.40	439	3.63	477	4.20	560	5.80	552	6.45	552	7.10
13,072	2110	...	...	...	...	...	...	...	...	...	...	...	...	...	...	...	...	...	...	...	...	...	...
13,760	2220	...	...	...	...	...	...	...	...	...	...	...	...	...	...	...	...	...	...	...	...	...	...
14,448	2440	...	...	...	...	...	...	...	...	...	...	...	...	...	...	...	...	...	...	...	...	...	...
15,136	2660	...	...	...	...	...	...	...	...	...	...	...	...	...	...	...	...	...	...	...	...	...	...
16,512	2885	...	...	...	...	...	...	...	...	...	...	...	...	...	...	...	...	...	...	...	...	...	...
17,888	3000	...	...	...	...	...	...	...	...	...	...	...	...	...	...	...	...	...	...	...	...	...	...
19,264	3330	...	...	...	...	...	...	...	...	...	...	...	...	...	...	...	...	...	...	...	...	...	...
20,640	3550	...	...	...	...	...	...	...	...	...	...	...	...	...	...	...	...	...	...	...	...	...	...
22,016	3775	...	...	...	...	...	...	...	...	...	...	...	...	...	...	...	...	...	...	...	...	...	...
23,392	...	...	...	...	...	...	...	...	...	...	...	...	...	...	...	...	...	...	...	...	...	...	...

NOTE—The black faced type indicates the most efficient point of operation for each pressure.

*Values Guaranteed for Standard Air: Temperature, 68° F.; Pressure, 29.92 inches; Weight, .07488 lbs. per cu. ft.*

*Wheel Diameter—76". Wheel Circumference—6.81 ft.*

When fans are equipped with vortex, increase speed 4%.



# Capacities of Clearance Type HV Fans

No. 2½ Type HV Fan, Single Width, Single Inlet

Volume C. F. M.	Outlet Velocity Feet per Min.	½" S. P.		¾" S. P.		1" S. P.		1¼" S. P.		1½" S. P.		1¾" S. P.		2" S. P.		2½" S. P.		3" S. P.	
		R. M.	B. P.	R. M.	B. P.	R. M.	B. P.	R. M.	B. P.	R. M.	B. P.	R. M.	B. P.	R. M.	B. P.	R. M.	B. P.	R. M.	B. P.
6,870	1000	181	41	207	51	236	78	260	92	286	105	306	129	330	151	368	183	423	238
6,907	1100	188	50	213	65	242	86	265	103	287	119	306	145	330	162	368	183	423	238
6,444	1200	197	59	221	72	247	92	270	110	294	127	335	159	369	183	407	206	407	238
6,981	1300	205	72	227	86	247	100	288	113	291	132	309	145	330	162	368	183	423	238
7,518	1400	215	86	236	97	256	110	271	127	294	148	312	162	335	178	369	206	407	238
8,056	1500	224	100	245	113	262	129	280	145	300	162	316	178	335	199	369	221	407	238
8,592	1600	233	113	254	135	271	148	289	162	306	183	321	199	366	215	371	258	407	238
9,129	1700	245	137	264	151	279	167	279	183	312	205	326	225	382	242	371	280	407	238
9,666	1800	256	156	274	175	289	188	308	207	318	229	338	253	382	269	371	312	407	238
10,208	1900	265	199	297	215	297	215	311	234	327	256	340	275	382	301	380	339	415	238
10,740	2000	274	245	327	264	306	242	319	264	336	283	351	307	382	328	389	358	421	238
11,814	2200	283	292	359	327	327	282	359	328	354	350	365	366	377	398	400	431	430	238
12,888	2400	348	377	359	398	374	377	377	485	409	425	388	445	395	473	415	522	442	238
13,962	2600	377	485	409	485	409	485	409	485	409	485	409	485	409	485	409	485	409	238
15,036	2800	467	485	409	485	409	485	409	485	409	485	409	485	409	485	409	485	409	238
16,110	3000	487	485	409	485	409	485	409	485	409	485	409	485	409	485	409	485	409	238
17,184	3200	499	485	409	485	409	485	409	485	409	485	409	485	409	485	409	485	409	238
18,258	3400	499	485	409	485	409	485	409	485	409	485	409	485	409	485	409	485	409	238
19,258	3600	499	485	409	485	409	485	409	485	409	485	409	485	409	485	409	485	409	238

No. 2½ Type HV Fan, Double Width, Double Inlet

Volume C. F. M.	Outlet Velocity Feet per Min.	½" S. P.		¾" S. P.		1" S. P.		1¼" S. P.		1½" S. P.		1¾" S. P.		2" S. P.		2½" S. P.		3" S. P.	
		R. M.	B. P.	R. M.	B. P.	R. M.	B. P.	R. M.	B. P.	R. M.	B. P.	R. M.	B. P.	R. M.	B. P.	R. M.	B. P.	R. M.	B. P.
10,740	1110	184	86	210	107	240	164	264	193	290	221	311	271	336	317	374	431	413	487
11,814	1220	191	105	215	137	240	181	269	216	291	250	311	271	336	317	374	431	413	487
12,888	1330	200	124	224	160	246	181	269	216	291	250	311	271	336	317	374	431	413	487
13,962	1440	208	151	230	181	251	210	272	237	295	277	314	305	335	340	374	431	413	487
15,036	1550	218	181	240	204	260	231	275	267	298	311	317	317	335	340	374	431	413	487
16,110	1660	227	210	249	237	266	271	284	305	305	340	321	374	340	418	375	431	413	487
17,184	1775	236	237	258	283	275	311	293	340	311	384	326	341	452	377	542	413	413	487
18,258	1895	249	288	268	317	283	351	298	384	317	431	331	347	508	377	589	413	413	487
19,258	2000	260	328	278	368	293	395	308	435	323	481	338	353	565	383	655	443	443	487
20,406	2110	287	418	296	470	301	452	316	491	332	538	345	361	632	386	712	421	443	487
21,480	2220	296	508	311	508	324	554	341	594	341	632	356	367	689	385	769	427	443	487
22,638	2440	332	651	344	651	344	651	344	651	344	651	344	651	344	651	344	651	344	487
25,776	2660	353	792	364	836	380	836	380	836	380	836	380	836	380	836	380	836	380	487
27,924	2885	383	836	383	836	383	836	383	836	383	836	383	836	383	836	383	836	383	487
30,072	3100	415	102	415	102	415	102	415	102	415	102	415	102	415	102	415	102	415	487
32,220	3330	443	115	443	115	443	115	443	115	443	115	443	115	443	115	443	115	443	487
34,368	3550	478	125	478	125	478	125	478	125	478	125	478	125	478	125	478	125	478	487
36,516	3775	499	132	499	132	499	132	499	132	499	132	499	132	499	132	499	132	499	487

NOTE—The black faced type indicates the most efficient point of operation for each pressure.

Values Guaranteed for Standard Air: Temperature, 68° F.; Pressure, 29.92 inches; Weight, 07488 lbs. per cu. ft.

Wheel Diameter—32½". Wheel Circumference—8.50 ft.

When fans are equipped with vortex, increase speed 4%.





# Capacities of Clearance Type HV Fans

No. 3¼ Type HV Fan, Single Width, Single Inlet

Volume Cubic Feet per Min.	Outlet Velocity Feet per Min.	¼" S.P.		½" S.P.		¾" S.P.		1" S.P.		1¼" S.P.		1½" S.P.		1¾" S.P.		2" S.P.		2½" S.P.		3" S.P.	
		R. P.M.	B. H.P.	R. P.M.	B. H.P.	R. P.M.	B. H.P.	R. P.M.	B. H.P.	R. P.M.	B. H.P.	R. P.M.	B. H.P.	R. P.M.	B. H.P.	R. P.M.	B. H.P.	R. P.M.	B. H.P.	R. P.M.	B. H.P.
9,075	1000	136	68	158	86	178	104	198	139	220	172	236	252	286	340	312	386	386	408	408	408
9,985	1100	142	82	162	109	180	132	200	152	220	236	254	286	340	312	386	386	408	408	408	408
10,890	1200	146	1.04	170	132	182	155	200	168	220	236	254	286	340	312	386	386	408	408	408	408
11,798	1300	154	1.22	172	145	188	164	204	186	220	236	254	286	340	312	386	386	408	408	408	408
12,705	1400	160	1.42	176	163	192	182	208	206	222	245	270	286	340	312	386	386	408	408	408	408
13,613	1500	168	1.68	184	191	196	214	216	250	226	240	270	286	340	312	386	386	408	408	408	408
14,520	1600	174	1.86	190	222	204	250	218	272	230	242	270	286	340	312	386	386	408	408	408	408
15,428	1700	182	2.18	196	250	208	272	222	318	236	244	282	286	340	312	386	386	408	408	408	408
16,335	1800	188	2.50	204	288	216	318	226	345	240	252	282	286	340	312	386	386	408	408	408	408
17,243	1900	...	...	210	3.2	222	3.55	234	3.85	244	4.28	256	266	314	310	322	332	340	356	356	356
18,150	2000	...	...	216	3.6	228	3.95	240	4.38	252	4.72	274	282	304	310	322	332	340	356	356	356
19,065	2200	...	...	...	...	242	5.0	254	5.35	262	5.82	274	282	304	310	322	332	340	356	356	356
21,780	2400	...	...	...	...	258	6.15	266	6.62	276	7.10	288	296	314	330	354	364	380	394	394	394
23,595	2600	...	...	...	...	...	...	280	8.00	292	8.55	302	310	326	340	354	364	380	394	394	394
25,410	2800	...	...	...	...	...	...	...	...	306	10.15	314	324	340	354	364	380	394	394	394	394
27,225	3000	...	...	...	...	...	...	...	...	...	...	328	338	354	364	380	394	394	394	394	394
29,040	3200	...	...	...	...	...	...	...	...	...	...	344	354	370	380	394	394	394	394	394	394
30,855	3400	...	...	...	...	...	...	...	...	...	...	...	364	374	390	394	394	394	394	394	394

No. 3¼ Type HV Fan, Double Width, Double Inlet

Volume C.F. M.	Outlet Velocity Feet per Min.	¼" S.P.		½" S.P.		¾" S.P.		1" S.P.		1¼" S.P.		1½" S.P.		1¾" S.P.		2" S.P.		2½" S.P.		3" S.P.	
		R. P.M.	B. H.P.	R. P.M.	B. H.P.	R. P.M.	B. H.P.	R. P.M.	B. H.P.	R. P.M.	B. H.P.	R. P.M.	B. H.P.	R. P.M.	B. H.P.	R. P.M.	B. H.P.	R. P.M.	B. H.P.	R. P.M.	B. H.P.
18,150	1110	138	1.43	160	1.81	181	2.39	201	2.92	223	3.61	240	4.58	258	5.25	290	7.14	317	9.07	338	11.4
19,966	1220	144	1.72	164	2.29	185	3.26	203	3.91	223	4.49	240	5.17	258	5.87	290	7.60	317	9.56	338	11.4
21,780	1330	148	2.18	173	2.77	185	3.84	207	4.33	225	5.15	240	6.30	256	6.89	284	8.19	315	10.3	337	12.9
23,596	1440	156	2.66	175	3.05	191	4.44	209	4.83	225	5.67	244	6.30	256	6.89	284	8.19	315	10.3	337	12.9
25,410	1550	162	3.05	179	3.53	195	4.91	213	5.25	229	6.01	244	6.30	256	6.89	284	8.19	315	10.3	337	12.9
27,226	1660	171	3.32	187	4.01	199	5.25	221	5.71	233	6.51	246	7.14	258	7.60	284	8.19	315	10.3	337	12.9
29,040	1775	185	3.91	193	4.66	207	5.25	221	6.25	233	7.25	244	7.60	284	8.19	290	9.09	313	11.3	337	12.9
30,856	1885	185	4.68	199	5.25	211	6.71	225	7.25	233	8.02	246	7.60	284	8.19	290	9.09	313	11.3	337	12.9
32,670	2000	191	5.25	207	6.05	219	7.46	238	8.09	248	8.99	260	9.56	270	10.2	294	11.8	315	13.2	337	14.8
34,486	2110	...	...	213	6.72	225	7.46	238	8.09	248	8.99	260	9.56	270	10.2	294	11.8	315	13.2	337	14.8
36,300	2220	...	...	219	7.56	225	10.0	254	9.20	266	10.9	276	11.4	286	13.9	309	15.8	315	14.7	337	16.2
38,130	2340	...	...	...	...	246	10.0	254	11.2	266	12.2	278	13.0	286	13.9	309	15.8	315	14.7	337	16.2
40,000	2460	...	...	...	...	262	12.9	270	13.9	280	14.9	292	15.9	300	16.7	319	18.5	335	19.6	335	23.3
43,560	2680	...	...	...	...	...	...	284	16.8	296	18.0	307	22.5	319	19.8	331	23.3	335	23.3	335	23.3
47,190	2885	...	...	...	...	...	...	...	...	311	21.3	319	28.5	329	23.1	345	25.6	350	27.1	374	29.6
50,820	3100	...	...	...	...	...	...	...	...	...	...	333	30.6	341	27.1	359	30.0	369	31.9	386	34.2
54,450	3330	...	...	...	...	...	...	...	...	...	...	349	38.6	355	31.7	371	34.3	384	36.5	400	39.1
58,080	3550	...	...	...	...	...	...	...	...	...	...	364	48.5	369	36.5	384	36.5	384	36.5	400	39.1
61,710	3775	...	...	...	...	...	...	...	...	...	...	386	58.5	386	42.0	412	44.5	423	47.3	451	52.5

NOTE—The black faced type indicates the most efficient point of operation for each pressure.

Values Guaranteed for Standard Air: Temperature, 68° F.; Pressure, 29.92 inches; Weight, .07488 lbs. per cu. ft.

Wheel Diameter—42¼". Wheel Circumference—11.05 ft.

When fans are equipped with vortex, increase speed 4%.





# Capacities of Clearance Type HV Fans

## No. 4 Type HV Fan, Single Width, Single Inlet

Volume C. F. M.	Outlet Velocity feet per Min.	¼" S. P.		⅓" S. P.		½" S. P.		⅔" S. P.		1" S. P.		1¼" S. P.		1½" S. P.		1¾" S. P.		2" S. P.		2½" S. P.		3" S. P.		
		R. P. M.	B. H. P.	R. P. M.	B. H. P.	R. P. M.	B. H. P.	R. P. M.	B. H. P.	R. P. M.	B. H. P.	R. P. M.	B. H. P.	R. P. M.	B. H. P.	R. P. M.	B. H. P.	R. P. M.	B. H. P.	R. P. M.	B. H. P.	R. P. M.	B. H. P.	
		2.21 139		2.75 148		3.51 164		4.35 181		5.50 207		6.95 209		8.69 235		10.9 255		13.4 268		15.6 283		18.3 298		21.2 315
27,540	1110	112	2.21	139	148	3.51	164	181	5.50	207	209	7.96	235	255	10.9	268	283	15.6	283	298	21.2	315	335	36.4
30,294	1220	117	2.63	132	149	4.20	151	166	6.36	181	181	9.43	235	255	13.8	268	283	17.1	296	296	22.5	335	355	40.4
33,048	1330	121	3.34	130	151	4.94	166	181	8.36	181	181	10.4	235	255	16.5	268	283	18.5	296	296	23.9	335	355	43.3
35,802	1440	126	3.91	142	154	5.21	168	181	9.94	181	181	11.6	235	255	19.4	268	283	21.1	296	296	25.6	335	355	46.2
38,556	1550	132	4.64	145	158	5.94	170	181	11.3	191	207	12.7	235	255	22.3	268	283	24.1	296	296	27.9	335	355	49.1
41,310	1660	138	5.36	151	162	6.09	173	186	13.8	207	207	14.5	235	255	25.3	268	283	26.5	296	296	28.0	335	355	52.0
44,064	1775	143	5.92	157	167	7.04	179	190	15.6	216	216	16.5	235	255	28.3	268	283	28.9	296	296	29.1	335	355	54.9
46,818	1885	149	6.95	162	171	7.98	182	193	17.1	226	226	18.5	235	255	31.1	268	283	29.9	296	296	30.3	335	355	57.8
49,572	2000	155	7.98	168	177	9.11	186	199	19.1	235	235	19.7	235	255	33.9	268	283	31.5	296	296	31.5	335	355	60.7
52,316	2110	160	8.99	173	182	10.1	191	201	21.2	244	244	21.2	235	255	36.8	268	283	33.4	296	296	33.4	335	355	63.6
55,080	2220	165	9.99	178	187	11.3	197	207	23.7	253	253	23.7	235	255	39.7	268	283	35.3	296	296	35.3	335	355	66.5
60,888	2440	172	11.0	182	199	12.2	209	216	26.2	262	262	26.2	235	255	42.6	268	283	38.2	296	296	38.2	335	355	69.4
66,096	2660	178	12.2	188	213	13.3	220	227	29.7	271	271	29.7	235	255	45.5	268	283	41.1	296	296	41.1	335	355	72.3
71,604	2885	183	13.5	194	19.5	14.5	231	241	33.2	282	282	33.2	235	255	48.4	268	283	44.0	296	296	44.0	335	355	75.2
77,112	3100	188	14.8	199	213	15.6	25.6	251	36.1	291	291	36.1	235	255	50.9	268	283	46.9	296	296	46.9	335	355	78.1
82,620	3330	193	16.1	204	19.5	16.1	262	272	39.0	300	300	39.0	235	255	53.8	268	283	49.8	296	296	49.8	335	355	81.0
88,128	3550	198	17.4	209	213	17.4	273	283	41.9	309	309	41.9	235	255	56.7	268	283	52.7	296	296	52.7	335	355	83.9
93,636	3775	203	18.7	214	213	18.7	284	294	44.0	318	318	44.0	235	255	59.6	268	283	55.6	296	296	55.6	335	355	86.8

NOTE—The black faced type indicates the most efficient point of operation for each pressure.

Values Guaranteed for Standard Air: Temperature, 68° F.; Pressure, 29.92 inches; Weight, 0.7488 lbs. per cu. ft.

Wheel Diameter—52" Wheel Circumference—13.60 ft.

When fans are equipped with vortex, increase speed 4%.











# Capacities of Clearance Type HV Fans

## No. 7 Type HV Fan, Single Width, Single Inlet

Volume C.F.M.	Outlet Velocity Feet per Min.	1/4" S.P.		3/8" S.P.		1/2" S.P.		5/8" S.P.		1" S.P.		1 1/4" S.P.		1 1/2" S.P.		1 3/4" S.P.		2" S.P.		2 1/2" S.P.		3" S.P.	
		R.P.M.	B.H.P.	R.P.M.	B.H.P.	R.P.M.	B.H.P.	R.P.M.	B.H.P.	R.P.M.	B.H.P.	R.P.M.	B.H.P.	R.P.M.	B.H.P.	R.P.M.	B.H.P.	R.P.M.	B.H.P.	R.P.M.	B.H.P.	R.P.M.	B.H.P.
42,150	1000	63	3.16	74	4.02	83	5.23	92	6.33	102	7.80	109	9.30	117	10.8	122	12.7	132	15.8	144	20.1	157	25.3
46,365	1100	66	3.80	76	5.02	84	6.12	93	7.40	102	8.90	110	10.4	117	12.0	122	14.0	132	16.9	144	20.1	157	25.3
50,580	1200	69	4.86	79	6.12	85	7.17	95	8.65	104	10.2	112	12.0	120	14.0	128	16.9	138	18.2	144	21.1	157	25.3
54,795	1300	72	5.70	80	6.75	87	7.60	95	8.65	102	9.90	109	11.4	117	13.0	122	15.2	132	18.2	144	21.1	157	25.3
59,010	1400	75	6.75	82	7.80	89	8.65	98	9.30	104	11.4	112	13.0	120	15.2	128	16.9	138	18.2	144	21.1	157	25.3
63,225	1500	78	7.81	85	8.87	92	9.30	98	9.30	104	11.4	112	13.0	120	15.2	128	16.9	138	18.2	144	21.1	157	25.3
67,440	1600	81	8.65	88	10.3	95	11.6	101	12.7	107	14.4	114	15.8	122	18.2	130	20.1	138	21.1	144	22.8	157	25.3
71,655	1700	84	10.1	91	11.6	97	12.7	103	14.4	109	16.1	116	17.7	122	20.3	130	21.1	138	21.1	144	22.8	157	25.3
75,870	1800	87	11.6	94	13.3	100	14.8	105	16.1	111	18.2	118	20.1	125	22.8	132	24.1	140	24.1	148	27.0	157	25.3
80,085	1900	90	14.8	98	14.8	103	16.5	108	18.0	114	19.8	119	21.1	124	22.8	132	24.1	140	24.1	148	27.0	157	25.3
84,300	2000	93	16.7	101	16.7	106	18.4	112	20.3	117	22.0	122	23.0	128	25.3	135	26.1	143	26.1	151	29.1	160	30.8
92,730	2200	98	16.7	106	16.7	112	23.2	118	24.9	122	27.0	127	28.1	132	30.8	141	34.8	149	35.0	157	38.0	166	41.8
101,180	2400	103	18.0	109	18.0	114	25.5	120	28.5	124	32.9	130	35.0	137	36.9	144	38.0	151	38.0	159	41.8	166	41.8
109,590	2600	108	18.4	112	18.4	117	23.2	122	24.9	125	27.0	130	28.1	137	30.8	144	34.8	151	35.0	159	38.0	166	41.8
118,020	2800	112	23.2	115	23.2	120	23.2	125	24.9	128	27.0	133	28.1	140	30.8	147	34.8	154	35.0	162	38.0	170	41.8
126,450	3000	116	28.5	118	28.5	123	23.2	128	24.9	131	27.0	136	28.1	143	30.8	150	34.8	157	35.0	164	38.0	172	41.8
134,880	3200	119	28.5	121	28.5	126	23.2	131	24.9	134	27.0	139	28.1	146	30.8	153	34.8	160	35.0	167	38.0	174	41.8
143,310	3400	122	34.0	124	34.0	129	23.2	134	24.9	137	27.0	142	28.1	149	30.8	156	34.8	163	35.0	170	38.0	176	41.8

## No. 7 Type HV Fan, Double Width, Double Inlet

Volume C.F.M.	Outlet Velocity Feet per Min.	1/4" S.P.		3/8" S.P.		1/2" S.P.		5/8" S.P.		1" S.P.		1 1/4" S.P.		1 1/2" S.P.		1 3/4" S.P.		2" S.P.		2 1/2" S.P.		3" S.P.	
		R.P.M.	B.H.P.	R.P.M.	B.H.P.	R.P.M.	B.H.P.	R.P.M.	B.H.P.	R.P.M.	B.H.P.	R.P.M.	B.H.P.	R.P.M.	B.H.P.	R.P.M.	B.H.P.	R.P.M.	B.H.P.	R.P.M.	B.H.P.	R.P.M.	B.H.P.
84,300	1110	64	6.36	75	8.44	84	11.1	93	13.3	104	16.8	111	21.2	120	24.4	134	33.2	147	44.2	157	53.1	171	64.7
92,730	1220	67	7.98	78	10.6	85	12.9	94	15.5	104	19.5	111	21.2	120	24.4	134	33.2	147	44.2	157	53.1	171	64.7
101,180	1330	70	10.2	81	12.9	88	15.1	94	16.4	104	19.5	111	21.2	120	24.4	134	33.2	147	44.2	157	53.1	171	64.7
109,590	1440	73	12.0	84	14.2	90	16.0	96	18.2	104	20.8	111	21.2	120	24.4	134	33.2	147	44.2	157	53.1	171	64.7
118,020	1550	76	14.2	87	16.4	93	18.2	99	20.8	105	23.9	112	26.7	119	28.8	126	35.5	133	35.5	141	44.2	149	53.1
126,450	1660	79	16.4	89	18.6	96	20.8	102	23.9	108	26.7	114	28.8	120	31.9	128	38.0	136	38.0	144	44.2	152	53.1
134,880	1775	82	18.2	92	21.6	99	20.8	103	26.7	109	30.2	114	33.2	120	35.5	128	42.2	136	42.2	144	44.2	152	53.1
143,310	1885	85	21.2	95	24.4	102	23.9	105	26.7	111	33.2	116	35.5	122	38.0	130	45.2	138	45.2	146	44.2	154	53.1
151,740	2000	88	24.4	98	27.9	105	24.4	108	31.1	114	37.8	119	38.0	124	42.2	132	48.6	140	48.6	148	44.2	157	53.1
160,170	2110	91	31.1	101	31.1	108	31.1	111	34.7	116	41.6	121	44.3	126	47.5	134	54.8	142	54.8	150	53.1	157	64.7
168,600	2220	94	35.1	104	35.1	111	31.1	114	37.8	119	44.3	124	47.5	130	51.9	138	59.9	146	59.9	154	53.1	162	64.7
185,460	2440	102	35.1	108	35.1	114	31.1	118	48.7	124	56.7	129	60.3	134	63.7	143	73.1	151	73.1	160	53.1	169	64.7
202,320	2660	114	35.1	114	35.1	122	31.1	122	59.9	132	64.7	138	73.1	144	77.5	154	86.1	162	86.1	170	53.1	179	64.7
219,180	2885	122	48.7	122	48.7	122	31.1	122	59.9	132	64.7	138	73.1	144	77.5	154	86.1	162	86.1	170	53.1	179	64.7
236,040	3100	122	59.9	122	59.9	122	31.1	122	59.9	132	64.7	138	73.1	144	77.5	154	86.1	162	86.1	170	53.1	179	64.7
252,900	3330	122	59.9	122	59.9	122	31.1	122	59.9	132	64.7	138	73.1	144	77.5	154	86.1	162	86.1	170	53.1	179	64.7
269,760	3550	122	59.9	122	59.9	122	31.1	122	59.9	132	64.7	138	73.1	144	77.5	154	86.1	162	86.1	170	53.1	179	64.7
286,620	3775	122	59.9	122	59.9	122	31.1	122	59.9	132	64.7	138	73.1	144	77.5	154	86.1	162	86.1	170	53.1	179	64.7

NOTE—The black faced type indicates the most efficient point of operation for each pressure.

Values Guaranteed for Standard Air: Temperature, 68° F.; Pressure, 29.92 inches; Weight, .07488 lbs. per cu. ft.

Wheel Diameter—91". Wheel Circumference—23.80 ft.

When fans are equipped with vortex, increase speed 4%.



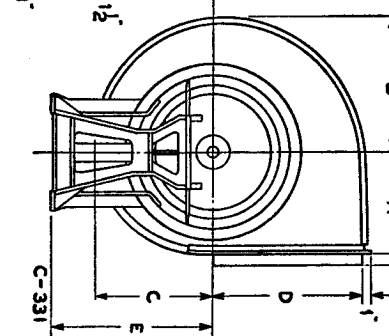
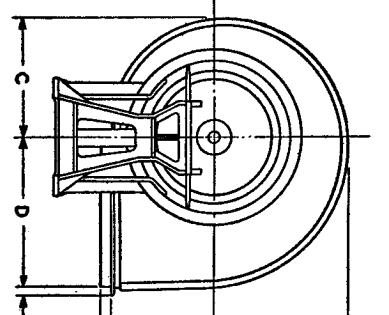
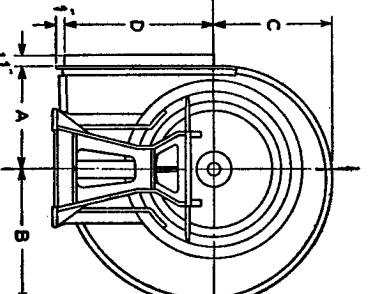
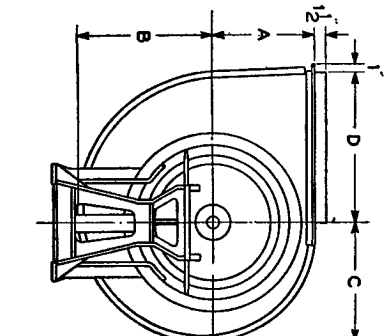
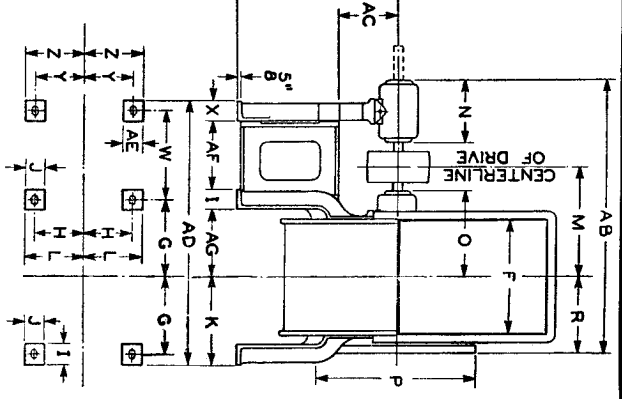








Type HV Fans — Class.....Arrangement — Clockwise Rotation.....Bearings



Size Fan	A	B	C	D	*	E	F	G	H	I	J	K	L	M	N	N	O	Ø	P	R	W	X	Y	Z	AB	AB	AC	AD	AE	AF	AG	
1/8	6 3/8	8 7/8	7 7/8	9 3/4	10 1/4	7 1/4	5 7/8	3 3/4	2 1/4	2 1/4	2 1/4	7 1/4	5 1/4	10 1/4	5 3/4	3 1/4	7 3/4	6 1/4	9 3/4	5 1/4	9 3/4	2 3/4	4 1/4	4 1/4	2 1/4	2 1/4	2 1/4	2 1/4	2 1/4	2 1/4	2 1/4	2 1/4
1/4	8 3/8	10 1/2	9 1/2	11 1/4	12 1/4	8 3/4	6 3/4	4 3/4	3 3/4	3 3/4	3 3/4	8 3/4	6 3/4	12 1/4	6 3/4	4 3/4	8 3/4	7 3/4	10 1/4	6 3/4	10 1/4	4 3/4	6 3/4	6 3/4	4 3/4	4 3/4	4 3/4	4 3/4	4 3/4	4 3/4	4 3/4	4 3/4
3/8	10 1/8	12 3/4	11 3/4	13 1/4	14 1/4	10 1/4	8 3/4	6 3/4	5 3/4	5 3/4	5 3/4	10 1/4	8 3/4	14 1/4	8 3/4	6 3/4	10 1/4	9 3/4	12 1/4	8 3/4	12 1/4	6 3/4	8 3/4	8 3/4	6 3/4	6 3/4	6 3/4	6 3/4	6 3/4	6 3/4	6 3/4	6 3/4
1/2	12 3/8	15 1/4	14 1/4	16 1/4	17 1/4	12 1/4	10 3/4	8 3/4	7 3/4	7 3/4	7 3/4	12 1/4	10 3/4	16 1/4	10 3/4	8 3/4	12 1/4	11 1/4	14 1/4	10 3/4	14 1/4	8 3/4	10 3/4	10 3/4	8 3/4	8 3/4	8 3/4	8 3/4	8 3/4	8 3/4	8 3/4	8 3/4
3/4	14 3/8	17 3/4	16 3/4	18 1/4	19 1/4	14 1/4	12 3/4	10 3/4	9 3/4	9 3/4	9 3/4	14 1/4	12 3/4	18 1/4	12 3/4	10 3/4	14 1/4	13 1/4	16 1/4	12 3/4	16 1/4	10 3/4	12 3/4	12 3/4	10 3/4	10 3/4	10 3/4	10 3/4	10 3/4	10 3/4	10 3/4	10 3/4
1	16 3/8	19 3/4	18 3/4	20 1/4	21 1/4	16 1/4	14 3/4	12 3/4	11 3/4	11 3/4	11 3/4	16 1/4	14 3/4	18 1/4	14 3/4	12 3/4	16 1/4	15 1/4	18 1/4	14 3/4	18 1/4	12 3/4	14 3/4	14 3/4	12 3/4	12 3/4	12 3/4	12 3/4	12 3/4	12 3/4	12 3/4	12 3/4
1 1/4	18 3/8	21 3/4	20 3/4	22 1/4	23 1/4	18 1/4	16 3/4	14 3/4	13 3/4	13 3/4	13 3/4	18 1/4	16 3/4	20 1/4	16 3/4	14 3/4	18 1/4	17 1/4	20 1/4	16 3/4	20 1/4	14 3/4	16 3/4	16 3/4	14 3/4	14 3/4	14 3/4	14 3/4	14 3/4	14 3/4	14 3/4	14 3/4
1 1/2	20 3/8	23 3/4	22 3/4	24 1/4	25 1/4	20 1/4	18 3/4	16 3/4	15 3/4	15 3/4	15 3/4	20 1/4	18 3/4	22 1/4	18 3/4	16 3/4	20 1/4	19 1/4	22 1/4	18 3/4	22 1/4	16 3/4	18 3/4	18 3/4	16 3/4	16 3/4	16 3/4	16 3/4	16 3/4	16 3/4	16 3/4	16 3/4
2	22 3/8	25 3/4	24 3/4	26 1/4	27 1/4	22 1/4	20 3/4	18 3/4	17 3/4	17 3/4	17 3/4	22 1/4	20 3/4	24 1/4	20 3/4	18 3/4	22 1/4	21 1/4	24 1/4	20 3/4	24 1/4	18 3/4	20 3/4	20 3/4	18 3/4	18 3/4	18 3/4	18 3/4	18 3/4	18 3/4	18 3/4	18 3/4
2 1/4	24 3/8	27 3/4	26 3/4	28 1/4	29 1/4	24 1/4	22 3/4	20 3/4	19 3/4	19 3/4	19 3/4	24 1/4	22 3/4	26 1/4	22 3/4	20 3/4	24 1/4	23 1/4	26 1/4	22 3/4	26 1/4	20 3/4	22 3/4	22 3/4	20 3/4	20 3/4	20 3/4	20 3/4	20 3/4	20 3/4	20 3/4	20 3/4
2 1/2	26 3/8	29 3/4	28 3/4	30 1/4	31 1/4	26 1/4	24 3/4	22 3/4	21 3/4	21 3/4	21 3/4	26 1/4	24 3/4	28 1/4	24 3/4	22 3/4	26 1/4	25 1/4	28 1/4	24 3/4	28 1/4	22 3/4	24 3/4	24 3/4	22 3/4	22 3/4	22 3/4	22 3/4	22 3/4	22 3/4	22 3/4	22 3/4
3	28 3/8	31 3/4	30 3/4	32 1/4	33 1/4	28 1/4	26 3/4	24 3/4	23 3/4	23 3/4	23 3/4	28 1/4	26 3/4	30 1/4	26 3/4	24 3/4	28 1/4	27 1/4	30 1/4	26 3/4	30 1/4	24 3/4	26 3/4	26 3/4	24 3/4	24 3/4	24 3/4	24 3/4	24 3/4	24 3/4	24 3/4	24 3/4

\*Inlet diameter of Pipe to fit over Inlet.  
 \*Outlet dimensions are outside.  
 †Dimensions for Fans with Ball Bearings.  
 All dimensions in inches.

C F M \_\_\_\_\_  
 Temp. \_\_\_\_\_  
 S P \_\_\_\_\_  
 R P M \_\_\_\_\_  
 B H P \_\_\_\_\_

Size Fan	PULLEY			KEYWAY IN HUB			SHAFT EXTENSION			Anch. Bolts
	Diarm.	Width	Depth	Diarm.	Width	Depth	Shaft Diarm.	Slave Brg.	Ball Brg.	
1/8	5	3	3/8	1 1/2	1/4	1/8	1 1/2	3 3/4	4 3/4	1/2
1/4	6	4	1/2	1 3/8	1/4	1/8	1 3/8	3 3/4	5 3/4	1/2
3/8	7	4	5/8	1 1/2	1/4	1/8	1 1/2	4 1/4	6 3/4	1/2
1/2	8	4	3/4	1 3/8	1/4	1/8	1 3/8	4 1/4	6 3/4	1/2
3/4	10	5	7/8	1 1/2	1/4	1/8	1 1/2	4 3/4	7 1/2	1/2
1	14	6	1	1 3/8	1/4	1/8	1 3/8	5 1/4	8 1/4	1/2
1 1/4	16	7	1 1/8	1 1/2	1/4	1/8	1 1/2	5 1/4	8 1/4	1/2
1 1/2	18	8	1 1/4	1 3/8	1/4	1/8	1 3/8	5 1/4	8 1/4	1/2
2	20	10	1 3/4	1 1/2	1/4	1/8	1 1/2	5 1/4	8 1/4	1/2
2 1/4	22	12	1 7/8	1 3/8	1/4	1/8	1 3/8	5 1/4	8 1/4	1/2
2 1/2	24	14	2	1 1/2	1/4	1/8	1 1/2	5 1/4	8 1/4	1/2
3	22	16	2 1/4	1 3/8	1/4	1/8	1 3/8	5 1/4	8 1/4	1/2

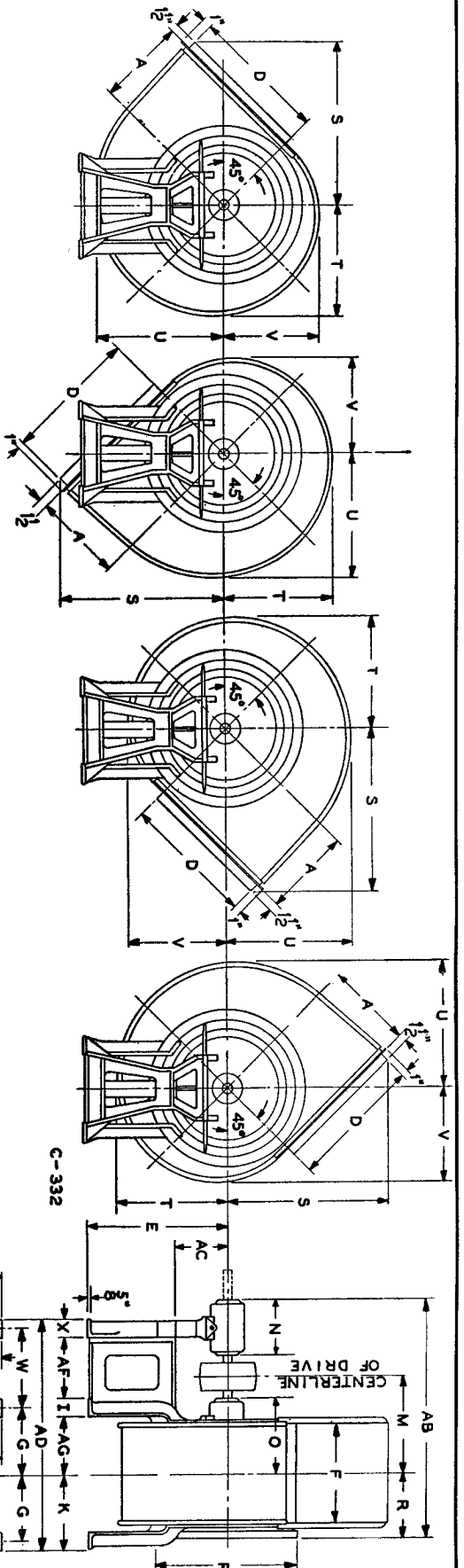
System Type Arr. Rot. Disch. Width

Size	Type	Arr.	Rot.	Disch.	Width
	HV	I	CR		S
PURCH.					ORDER NO.
LOC.					F
USER					OUR ORDER NO.
LOC.					DATE
					DRAWN BY
					CERTIFIED BY



This print can be certified by home office only

DRG. No. F-15822A



Bottom Angular Up Discharge  
 Bottom Angular Down Discharge  
 Top Angular Down Discharge  
 Top Angular Up Discharge

Arrangement 1 — Clockwise Rotation Bearings

Size Fan	A	D	E	F	G	H	I	J	K	L	M	N	N	O	P	R	S	T	U	V	W	X	Y	Z	AB	AB	AC	AD	AE	AF	AG		
1/8	6 1/8	9 1/4	10 1/4	7 1/2	5 1/4	3 1/4	2 1/4	2 1/4	7 1/4	6 1/4	10 1/4	6 1/4	8 1/4	7 1/4	9 1/4	5 1/4	12 1/4	8 3/8	9 3/8	7 1/4	9 3/8	2 3/8	3 3/8	4 3/8	2 3/8	2 3/8	2 3/8	4 1/4	2 3/8	3 3/8	7 1/4	4 3/8	4 3/8
1/4	7 3/8	11 1/8	13 1/4	8 1/2	6 1/4	4 1/2	3 1/2	3 1/2	8 3/8	7 3/8	12 1/4	7 3/8	9 3/8	8 3/8	10 1/4	6 1/2	14 1/4	9 3/8	10 3/8	8 1/2	10 1/4	3 3/4	4 3/4	5 3/4	3 3/4	3 3/4	5 1/2	3 3/4	4 3/4	8 1/4	5 3/4	5 3/4	
3/8	8 3/8	13	15 1/4	10	7 3/4	5 1/2	4 1/2	4 1/2	9 3/8	8 3/8	13 1/4	8 3/8	10 3/8	9 3/8	11 1/4	7 1/2	15 1/4	10 3/8	11 3/8	9 1/2	11 1/4	4 1/2	5 1/2	6 1/2	4 1/2	4 1/2	6 1/2	4 1/2	5 1/2	9 1/4	6 1/2	6 1/2	
1/2	9 3/8	14 1/4	16 1/4	11 1/4	8 3/4	6 1/2	5 1/2	5 1/2	10 3/8	9 3/8	14 1/4	10 3/8	12 3/8	11 1/4	13 1/4	8 1/2	16 1/4	12 3/8	13 3/8	10 3/8	12 3/8	5 1/2	6 1/2	7 1/2	5 1/2	5 1/2	7 1/2	5 1/2	6 1/2	10 1/4	7 1/2	7 1/2	
5/8	10 3/8	16 1/4	18 1/4	12 3/8	9 3/4	7 1/2	6 1/2	6 1/2	11 3/8	10 3/8	16 1/4	11 3/8	13 3/8	12 3/8	14 3/8	9 1/2	18 1/4	13 3/8	14 3/8	11 3/8	13 3/8	6 1/2	7 1/2	8 1/2	6 1/2	6 1/2	8 1/2	6 1/2	7 1/2	11 1/4	8 1/2	8 1/2	
3	12 3/8	19 1/4	20 1/4	14 3/8	10 1/2	8 1/2	7 1/2	7 1/2	13 3/8	12 3/8	19 1/4	12 3/8	14 3/8	13 3/8	15 3/8	10 3/4	20 1/4	14 3/8	15 3/8	12 3/8	14 3/8	7 1/2	8 1/2	9 1/2	7 1/2	7 1/2	9 1/2	7 1/2	8 1/2	11 1/4	9 1/2	9 1/2	
1 1/4	14 3/8	22 1/4	23 1/4	17 3/8	12 3/8	9 3/4	8 1/2	8 1/2	15 3/8	14 3/8	22 1/4	15 3/8	17 3/8	16 3/8	18 3/8	11 3/4	23 1/4	17 3/8	18 3/8	15 3/8	17 3/8	8 1/2	9 1/2	10 1/2	8 1/2	8 1/2	10 1/2	8 1/2	9 1/2	13 1/4	10 1/2	10 1/2	
1 3/4	16 3/8	25 1/4	26 3/4	19 3/8	14 3/8	10 3/4	9 1/2	9 1/2	17 3/8	16 3/8	25 1/4	17 3/8	19 3/8	18 3/8	20 3/8	12 3/4	26 3/4	19 3/8	20 3/8	17 3/8	19 3/8	9 1/2	10 1/2	11 1/2	9 1/2	9 1/2	11 1/2	9 1/2	10 1/2	14 3/8	11 1/2	11 1/2	
2 1/4	18 3/8	28 3/4	30	22 3/8	16 3/8	11 3/4	10 3/4	10 3/4	19 3/8	18 3/8	28 3/4	19 3/8	21 3/8	20 3/8	22 3/8	13 3/4	30	21 3/8	22 3/8	19 3/8	21 3/8	10 3/4	11 1/2	12 1/2	10 3/4	10 3/4	12 1/2	10 3/4	11 1/2	15 3/8	12 1/2	12 1/2	
2 3/4	20 3/8	32	33	24 3/8	18 3/8	12 3/4	11 3/4	11 3/4	21 3/8	20 3/8	32	21 3/8	23 3/8	22 3/8	24 3/8	14 3/4	33	23 3/8	24 3/8	21 3/8	23 3/8	11 3/4	12 1/2	13 1/2	11 3/4	11 3/4	13 1/2	11 3/4	12 1/2	16 3/8	13 1/2	13 1/2	
3	22 3/8	35 1/4	36 3/4	27 3/8	20 3/8	14 3/4	13 3/4	13 3/4	23 3/8	22 3/8	35 1/4	23 3/8	25 3/8	24 3/8	26 3/8	15 3/4	36 3/4	25 3/8	26 3/8	23 3/8	25 3/8	12 3/4	13 1/2	14 1/2	12 3/4	12 3/4	14 1/2	12 3/4	13 1/2	18 3/8	14 1/2	14 1/2	
3 3/4	25	38 3/4	39 3/4	29 3/4	18 3/4	15 3/4	14 3/4	14 3/4	25	24 1/2	38 3/4	25 3/8	27 3/8	26 3/8	28 3/8	16 3/4	39 3/4	27 3/8	28 3/8	25 3/8	27 3/8	13 3/4	14 1/2	15 1/2	13 3/4	13 3/4	15 1/2	13 3/4	14 1/2	19 3/8	15 1/2	15 1/2	

Inside diameter of Pipe to fit over Inlet.  
 \*Outlet dimensions are outside.  
 †Dimensions for Fans with Ball Bearings.  
 All dimensions in inches.

C F M \_\_\_\_\_  
 Temp. \_\_\_\_\_  
 S P \_\_\_\_\_  
 R P M \_\_\_\_\_  
 B H P \_\_\_\_\_

Size Fan	PULLEY			KEYWAY IN HUB			SHAFT EXTENSION			
	Diarm.	Width	Depth	Width	Depth	Shaft Diarm.	Sleeve Brg. Length	Ball Brg. Length	Anch. Bolts	
1/8	5	3	3/8	3/8	1/8	1 1/8	3 1/2	4 3/4	3/8	
1/4	6	4	1/2	1/2	1 1/8	1 1/2	3 3/4	5 3/4	1/2	
3/8	7	4	5/8	5/8	1 1/4	1 3/8	4 1/4	6 3/4	1/2	
1/2	8	4	3/4	3/4	1 1/2	1 3/4	4 1/2	7 1/4	1/2	
5/8	10	4	7/8	7/8	1 3/8	1 7/8	4 3/4	8 1/4	1/2	
3/4	14	5	1	1	1 3/4	2 1/8	5 1/4	9	1/2	
1	16	5	1 1/8	1 1/8	1 7/8	2 1/4	5 3/4	9 1/4	3/4	
1 1/4	18	6	1 1/4	1 1/4	2	2 3/8	6 1/4	10 1/4	3/4	
1 3/4	20	6	1 1/2	1 1/2	2 1/8	2 3/4	6 3/4	10 3/4	3/4	
2	22	6	1 3/4	1 3/4	2 1/4	3	7 1/4	11 1/4	3/4	
2 1/4			2 1/4	2 1/4	2 1/2	3 1/4		11 3/4	3/4	
2 3/4			2 3/4	2 3/4	2 3/4	3 1/2		12 1/4	3/4	
3			3	3	2 3/4	3 1/2		12 3/4	3/4	

System \_\_\_\_\_

Size \_\_\_\_\_ Type HV Arr. CR Rot. CR Disch. S Width

PURCH. \_\_\_\_\_ ORDER NO. \_\_\_\_\_

USER \_\_\_\_\_ OUR ORDER NO. \_\_\_\_\_

LOC. \_\_\_\_\_ DATE \_\_\_\_\_

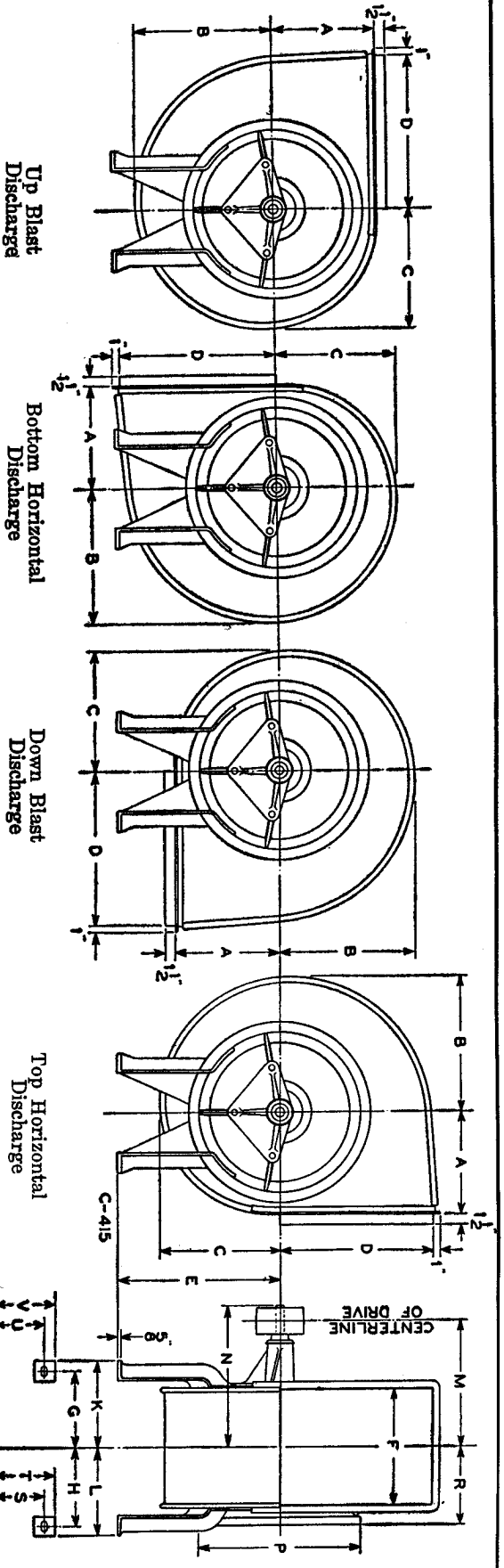
LOC. \_\_\_\_\_ DRAWN BY \_\_\_\_\_

INCORPORATED, USA WEST CHICAGO, IL

INCORPORATED, USA

CERTIFIED BY \_\_\_\_\_

This print can be certified by home office only



Type HV Fans — Class Arrangements 2 — Clockwise Rotation — Ball Bearings

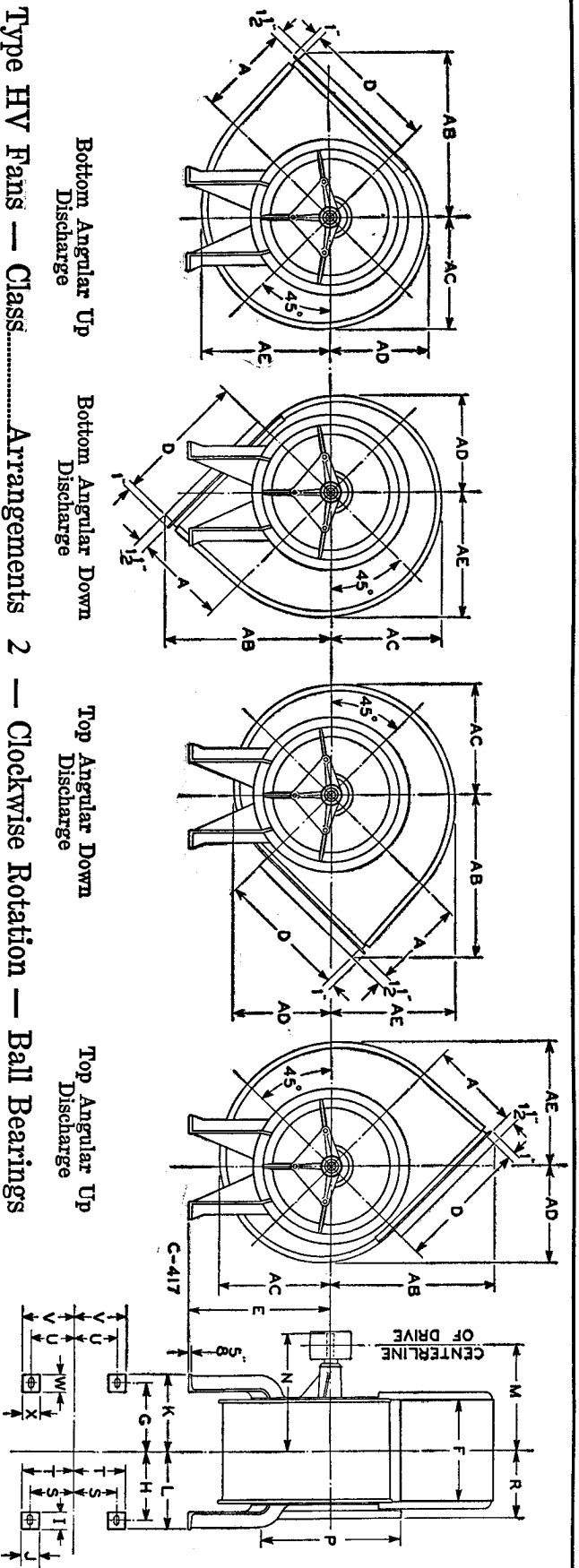
Size Fan	PULLEY																		SHAFT EXTENSION		KEYWAY IN DRIVE HUB			Anch. Bolts															
	A	B	C	D	E	F	G	H	I	J	K	L	M	N	P	R	S	T	U	V	W	X	Diam.		Length	Diam.	Width	Depth											
1/2	6 1/8	8 1/4	7 3/8	9 3/4	10 1/4	7 1/4	5 7/8	5 7/8	2 1/4	2 1/4	7 1/8	7 1/8	18 3/4	15 1/8	9 3/4	5 1/4	3 1/2	5 1/4	3 1/2	5 1/4	3 1/2	2 1/4	3 1/4	5	3	1 1/2	3 3/4	1 1/4	1 1/4	1/2	1/2	3/8	1/2	5/8	5/8				
3/4	7 3/8	10 1/4	9 1/8	11 3/4	12 1/2	8 1/4	6 3/8	6 3/8	3 1/4	3 1/4	8 1/8	8 1/8	19 3/4	16 1/8	10 1/4	6 1/2	4 1/8	6 1/2	4 1/8	6 1/2	4 1/8	3 3/8	4 1/2	6	4	2 1/4	4 1/2	2 1/4	2 1/4	1 1/2	1 1/2	1 1/2	1 1/2	1 1/2	1 1/2	1/2	1/2	5/8	5/8
1	8 3/8	11 1/2	10 1/2	13 1/4	14 1/4	9 1/2	7 1/4	7 1/4	4 1/4	4 1/4	9 1/2	9 1/2	21 1/4	17 1/8	11 1/4	7 1/2	5 1/4	7 1/2	5 1/4	7 1/2	5 1/4	4 1/4	5 1/4	7	5	3 3/8	5 1/2	3 3/8	3 3/8	2 1/4	2 1/4	2 1/4	2 1/4	2 1/4	2 1/4	1/2	1/2	5/8	5/8
1 1/4	9 3/8	12 3/4	11 3/4	15 1/4	16 1/4	10 1/4	8 1/4	8 1/4	5 1/4	5 1/4	10 1/4	10 1/4	23 1/4	19 1/8	12 1/4	8 1/4	6 1/4	8 1/4	6 1/4	8 1/4	6 1/4	5 1/4	6 1/4	8	6	4 1/4	6 1/4	4 1/4	4 1/4	3 1/4	3 1/4	3 1/4	3 1/4	3 1/4	3 1/4	1/2	1/2	5/8	5/8
1 1/2	10 3/8	14 1/4	13 1/4	17 1/4	18 1/4	11 1/4	9 1/4	9 1/4	6 1/4	6 1/4	11 1/4	11 1/4	25 1/4	21 1/8	13 1/4	9 1/4	7 1/4	9 1/4	7 1/4	9 1/4	7 1/4	6 1/4	7 1/4	9	7	5 1/4	7 1/4	5 1/4	5 1/4	4 1/4	4 1/4	4 1/4	4 1/4	4 1/4	4 1/4	1/2	1/2	5/8	5/8
1 3/4	11 3/8	15 1/4	14 1/4	19 1/4	20 1/4	12 1/4	10 1/4	10 1/4	7 1/4	7 1/4	12 1/4	12 1/4	27 1/4	23 1/8	14 1/4	10 1/4	8 1/4	10 1/4	8 1/4	10 1/4	8 1/4	7 1/4	8 1/4	10	8	6 1/4	8 1/4	6 1/4	6 1/4	5 1/4	5 1/4	5 1/4	5 1/4	5 1/4	5 1/4	1/2	1/2	5/8	5/8
2	12 3/8	17 1/4	16 1/4	21 1/4	22 1/4	13 1/4	11 1/4	11 1/4	8 1/4	8 1/4	13 1/4	13 1/4	29 1/4	25 1/8	15 1/4	11 1/4	9 1/4	11 1/4	9 1/4	11 1/4	9 1/4	8 1/4	9 1/4	11	9	7 1/4	9 1/4	7 1/4	7 1/4	6 1/4	6 1/4	6 1/4	6 1/4	6 1/4	6 1/4	1/2	1/2	5/8	5/8
2 1/4	13 3/8	18 1/4	17 1/4	23 1/4	24 1/4	14 1/4	12 1/4	12 1/4	9 1/4	9 1/4	14 1/4	14 1/4	31 1/4	27 1/8	16 1/4	12 1/4	10 1/4	12 1/4	10 1/4	12 1/4	10 1/4	9 1/4	10 1/4	12	10	8 1/4	10 1/4	8 1/4	8 1/4	7 1/4	7 1/4	7 1/4	7 1/4	7 1/4	7 1/4	1/2	1/2	5/8	5/8
2 1/2	14 3/8	20 1/4	19 1/4	25 1/4	26 1/4	15 1/4	13 1/4	13 1/4	10 1/4	10 1/4	15 1/4	15 1/4	33 1/4	29 1/8	17 1/4	13 1/4	11 1/4	13 1/4	11 1/4	13 1/4	11 1/4	10 1/4	11 1/4	13	11	9 1/4	11 1/4	9 1/4	9 1/4	8 1/4	8 1/4	8 1/4	8 1/4	8 1/4	8 1/4	1/2	1/2	5/8	5/8
2 3/4	15 3/8	21 1/4	20 1/4	27 1/4	28 1/4	16 1/4	14 1/4	14 1/4	11 1/4	11 1/4	16 1/4	16 1/4	35 1/4	31 1/8	18 1/4	14 1/4	12 1/4	14 1/4	12 1/4	14 1/4	12 1/4	11 1/4	12 1/4	14	12	10 1/4	12 1/4	10 1/4	10 1/4	9 1/4	9 1/4	9 1/4	9 1/4	9 1/4	9 1/4	1/2	1/2	5/8	5/8
3	16 3/8	22 1/4	21 1/4	29 1/4	30 1/4	17 1/4	15 1/4	15 1/4	12 1/4	12 1/4	17 1/4	17 1/4	37 1/4	33 1/8	19 1/4	15 1/4	13 1/4	15 1/4	13 1/4	15 1/4	13 1/4	12 1/4	13 1/4	15	13	11 1/4	13 1/4	11 1/4	11 1/4	10 1/4	10 1/4	10 1/4	10 1/4	10 1/4	10 1/4	1/2	1/2	5/8	5/8

\*Inside diameter of Pipe to fit over Inlet.  
\*Outlet dimensions are outside.  
All dimensions in Inches.

C F M \_\_\_\_\_  
Temp \_\_\_\_\_  
S P \_\_\_\_\_  
R P M \_\_\_\_\_  
B H P \_\_\_\_\_

DRG. No. F-14546 A-1

System	Type	Arr.	Rot.	Disch.	Width
	HV	2	CR		S
PURCH.	ORDER NO.				
LOC.	OUR ORDER NO.				
USER	DATE				
LOC.	DRAWN BY				
<b>FAN SERVICES</b> West Chicago, IL INCORPORATED... USA					
CERTIFIED BY					



Type HV Fans — Class.....Arrangements 2 — Clockwise Rotation — Ball Bearings

Size Fan	PULLEY																			SHAFT EXTENSION		KEYWAY IN DRIVE HUB		Anch. Bolts										
	A	AB	AC	AD	AE	D	E	F	G	H	I	J	K	L	M	N	P	R	S	T	U	V	W		X	Diam.	Face	Diam.	Length	Width	Depth			
3/4	6 1/2	12 1/8	8 3/8	7 1/2	9 3/8	10 1/2	7 1/2	8 3/4	5 7/8	7 1/8	2 1/4	7 1/8	7 1/8	13 3/8	15 1/4	9 3/8	5 1/4	3 1/2	5 1/4	3 1/4	5 1/4	3 1/4	2 1/4	2 1/4	5 1/4	6	3	1	1 1/4	3 3/4	1 1/4	1 1/4	3/4	3/4
1	8 1/2	16 1/8	11	8 1/2	10 1/2	12 3/8	10	10 3/8	8	8 3/4	3 3/4	8 3/4	8 3/4	15 3/8	17 1/4	11 3/8	6 1/4	4	6	4	6	4	3 1/4	3 1/4	6	4	3	1 1/2	4 1/8	1 1/2	1 1/2	3/4	3/4	
1 1/4	9 3/4	18 3/8	12 3/8	10 3/8	12 3/8	14 1/8	11 1/4	11 1/4	8 3/8	8 3/8	4 1/4	8 3/8	8 3/8	16 3/8	18 1/4	12 3/8	7 3/8	5 3/8	7 3/8	5 3/8	7 3/8	5 3/8	4 1/4	4 1/4	7 1/4	4	4	1 3/8	4 1/8	1 3/8	1 3/8	3/4	3/4	
1 1/2	10 1/2	19 3/8	13 3/8	11 3/8	13 3/8	15 1/8	12 3/8	12 3/8	9 3/8	9 3/8	4 1/2	9 3/8	9 3/8	17 3/8	19 1/4	13 3/8	8 3/8	6 3/8	8 3/8	6 3/8	8 3/8	6 3/8	5 1/4	5 1/4	8 1/4	4 1/4	4 1/4	1 5/8	4 1/8	1 5/8	1 5/8	3/4	3/4	
1 3/8	11 3/4	21 1/8	14 3/8	12 3/8	14 3/8	16 1/8	13 3/8	13 3/8	10 3/8	10 3/8	4 3/4	10 3/8	10 3/8	18 3/8	20 1/4	14 3/8	9 3/8	7 3/8	9 3/8	7 3/8	9 3/8	7 3/8	6 1/4	6 1/4	9 1/4	4 1/2	4 1/2	1 7/8	4 1/8	1 7/8	1 7/8	3/4	3/4	
1 1/4	12 3/4	23 1/8	16 3/8	14 3/8	16 3/8	18 1/8	14 3/8	14 3/8	11 3/8	11 3/8	4 3/4	11 3/8	11 3/8	19 3/8	21 1/4	15 3/8	10 3/8	8 3/8	10 3/8	8 3/8	10 3/8	8 3/8	7 1/4	7 1/4	10 1/4	4 1/2	4 1/2	1 7/8	4 1/8	1 7/8	1 7/8	3/4	3/4	
1 1/2	13 3/4	25 1/8	17 3/8	15 3/8	17 3/8	19 1/8	15 3/8	15 3/8	12 3/8	12 3/8	4 3/4	12 3/8	12 3/8	20 3/8	22 1/4	16 3/8	11 3/8	9 3/8	11 3/8	9 3/8	11 3/8	9 3/8	8 1/4	8 1/4	11 1/4	4 1/2	4 1/2	1 7/8	4 1/8	1 7/8	1 7/8	3/4	3/4	
2	16 3/4	31 3/8	21 3/8	18 3/8	21 3/8	23 1/8	19 3/8	19 3/8	14 3/8	14 3/8	5 1/4	14 3/8	14 3/8	23 3/8	25 1/4	19 3/8	12 3/8	10 3/8	12 3/8	10 3/8	12 3/8	10 3/8	9 1/4	9 1/4	13 1/4	4 1/2	4 1/2	1 7/8	4 1/8	1 7/8	1 7/8	3/4	3/4	
2 1/4	18 3/4	34 3/8	23 3/8	20 3/8	23 3/8	25 1/8	21 3/8	21 3/8	15 3/8	15 3/8	5 1/4	15 3/8	15 3/8	25 3/8	27 1/4	21 3/8	13 3/8	11 3/8	13 3/8	11 3/8	13 3/8	11 3/8	10 1/4	10 1/4	14 1/4	4 1/2	4 1/2	1 7/8	4 1/8	1 7/8	1 7/8	3/4	3/4	
2 1/2	20 3/4	38 3/8	26 3/8	22 3/8	26 3/8	28 1/8	23 3/8	23 3/8	16 3/8	16 3/8	5 1/4	16 3/8	16 3/8	27 3/8	29 1/4	23 3/8	14 3/8	12 3/8	14 3/8	12 3/8	14 3/8	12 3/8	11 1/4	11 1/4	15 1/4	4 1/2	4 1/2	1 7/8	4 1/8	1 7/8	1 7/8	3/4	3/4	
2 3/4	22 3/4	42 3/8	28 3/8	24 3/8	28 3/8	30 1/8	25 3/8	25 3/8	17 3/8	17 3/8	5 1/4	17 3/8	17 3/8	29 3/8	31 1/4	25 3/8	15 3/8	13 3/8	15 3/8	13 3/8	15 3/8	13 3/8	12 1/4	12 1/4	16 1/4	4 1/2	4 1/2	1 7/8	4 1/8	1 7/8	1 7/8	3/4	3/4	
3	25	46 3/8	31 3/8	27 3/8	31 3/8	33 1/8	29 3/8	29 3/8	18 3/8	18 3/8	5 1/4	18 3/8	18 3/8	31 3/8	33 1/4	29 3/8	16 3/8	14 3/8	16 3/8	14 3/8	16 3/8	14 3/8	13 1/4	13 1/4	17 1/4	4 1/2	4 1/2	1 7/8	4 1/8	1 7/8	1 7/8	3/4	3/4	

Inside diameter of Pipe to fit over Inlet.  
 \*Outlet dimensions are outside.  
 All dimensions in Inches.

C F M \_\_\_\_\_  
 Temp \_\_\_\_\_  
 S P \_\_\_\_\_  
 R P M \_\_\_\_\_  
 B H P \_\_\_\_\_

DRG. No. F-14546 B-1

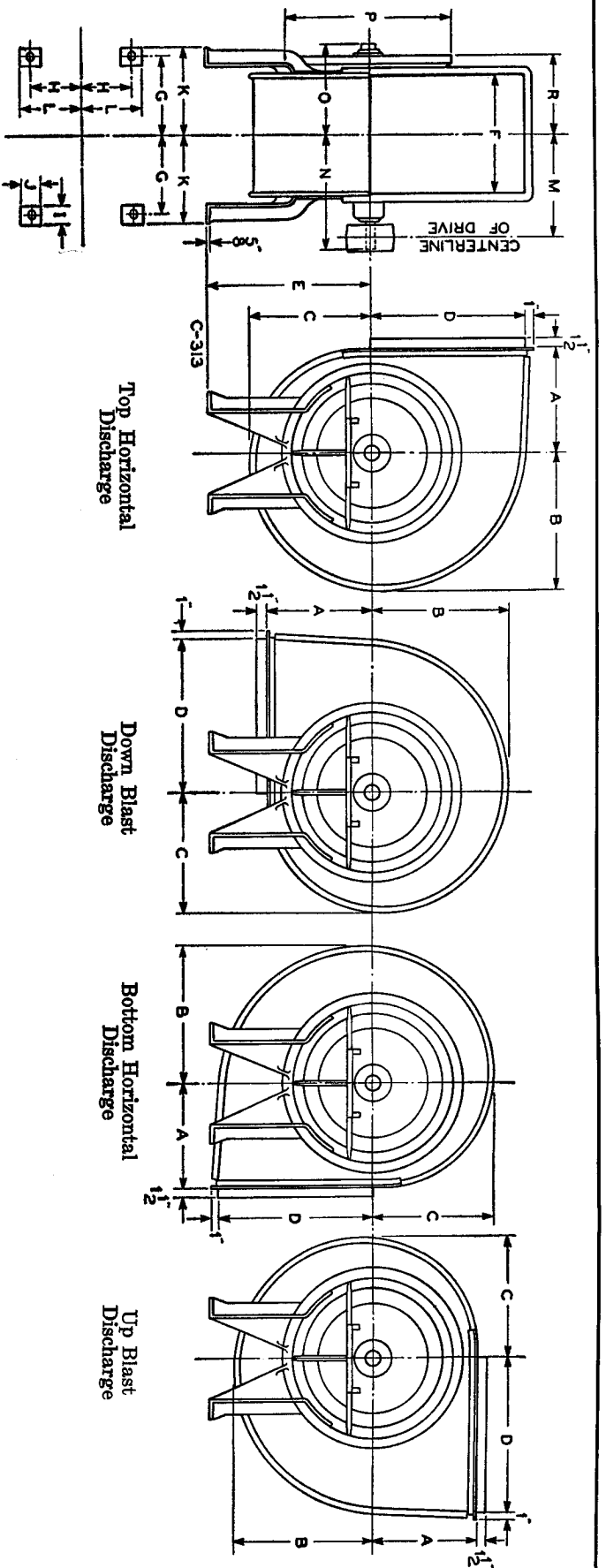
System \_\_\_\_\_  
 Size \_\_\_\_\_ Type HV Arr. 2 Rot. CR Disch. \_\_\_\_\_ Width S

PURCH. \_\_\_\_\_  
 I.O.C. \_\_\_\_\_  
 USER \_\_\_\_\_  
 I.O.C. \_\_\_\_\_

FAN SERVICES West Chicago, IL  
 INCORPORATED, USA

ORDER NO. \_\_\_\_\_  
 OUR ORDER NO. \_\_\_\_\_  
 DATE \_\_\_\_\_  
 DRAWN BY \_\_\_\_\_  
 CERTIFIED BY \_\_\_\_\_

This print can be certified by home office only



Type HV Fans — Class.....Arrangement 3 — Counterclockwise Rotation.....Bearings

Size Fan	A	B	C	D	E	F	G	H	I	J	K	L	M	N	O	P	R	PULLEY		SHAFT EXTENSION		KEYWAY IN DRIVE HUB		Anchor Bolts		
																		Diam.	Faces	Diam.	Sleeve Brg. Length	Ball Brg. Length	Width		Depth	
1 3/4	11 3/4	15 3/4	18 3/4	17 3/4	19	18 3/4	10 3/4	7	4 1/4	4 1/4	12 3/4	10 3/4	16 3/4	18 3/4	18 3/4	12	18	9 3/4	7	4 1/4	4 1/4	5 3/4	8 3/4	1 3/4	1 3/4	1 3/4
1 1/2	12 3/4	17 3/4	19 3/4	18 3/4	20 3/4	19 3/4	11 3/4	8 3/4	5 3/4	5 3/4	13 3/4	11 3/4	17 3/4	19 3/4	19 3/4	13	19	10 3/4	8 3/4	5 3/4	5 3/4	6 3/4	9 3/4	1 3/4	1 3/4	1 3/4
1 1/4	14 3/4	19 3/4	21 3/4	20 3/4	22 3/4	21 3/4	12 3/4	9 3/4	6 3/4	6 3/4	14 3/4	12 3/4	18 3/4	20 3/4	20 3/4	14	20	11 3/4	9 3/4	6 3/4	6 3/4	7 3/4	8 3/4	1 3/4	1 3/4	1 3/4
2	16 3/4	22 3/4	25 3/4	24 3/4	26 3/4	25 3/4	13 3/4	10 3/4	7 3/4	7 3/4	15 3/4	13 3/4	19 3/4	21 3/4	21 3/4	15	21	12 3/4	10 3/4	7 3/4	7 3/4	8 3/4	9 3/4	1 3/4	1 3/4	1 3/4
2 1/2	18 3/4	25 3/4	28 3/4	27 3/4	29 3/4	28 3/4	14 3/4	11 3/4	8 3/4	8 3/4	16 3/4	14 3/4	20 3/4	22 3/4	22 3/4	16	22	13 3/4	11 3/4	8 3/4	8 3/4	9 3/4	10 3/4	1 3/4	1 3/4	1 3/4
2 3/4	20 3/4	28 3/4	32	30 3/4	32	31 3/4	15 3/4	12 3/4	9 3/4	9 3/4	17 3/4	15 3/4	21 3/4	23 3/4	23 3/4	17	23	14 3/4	12 3/4	9 3/4	9 3/4	10 3/4	11 3/4	1 3/4	1 3/4	1 3/4
3	22 3/4	30 3/4	34 3/4	32 3/4	34 3/4	33 3/4	16 3/4	13 3/4	10 3/4	10 3/4	18 3/4	16 3/4	22 3/4	24 3/4	24 3/4	18	24	15 3/4	13 3/4	10 3/4	10 3/4	11 3/4	12 3/4	1 3/4	1 3/4	1 3/4

\*Inside diameter of Pipe to fit over Inlet.  
 \*Outlet dimensions are outside.  
 †Dimensions for Fans with Ball Bearings.  
 All dimensions in inches.

C F M \_\_\_\_\_  
 Temp \_\_\_\_\_  
 S P \_\_\_\_\_  
 R P M \_\_\_\_\_  
 B H P \_\_\_\_\_

DRG. No. F-14549 A

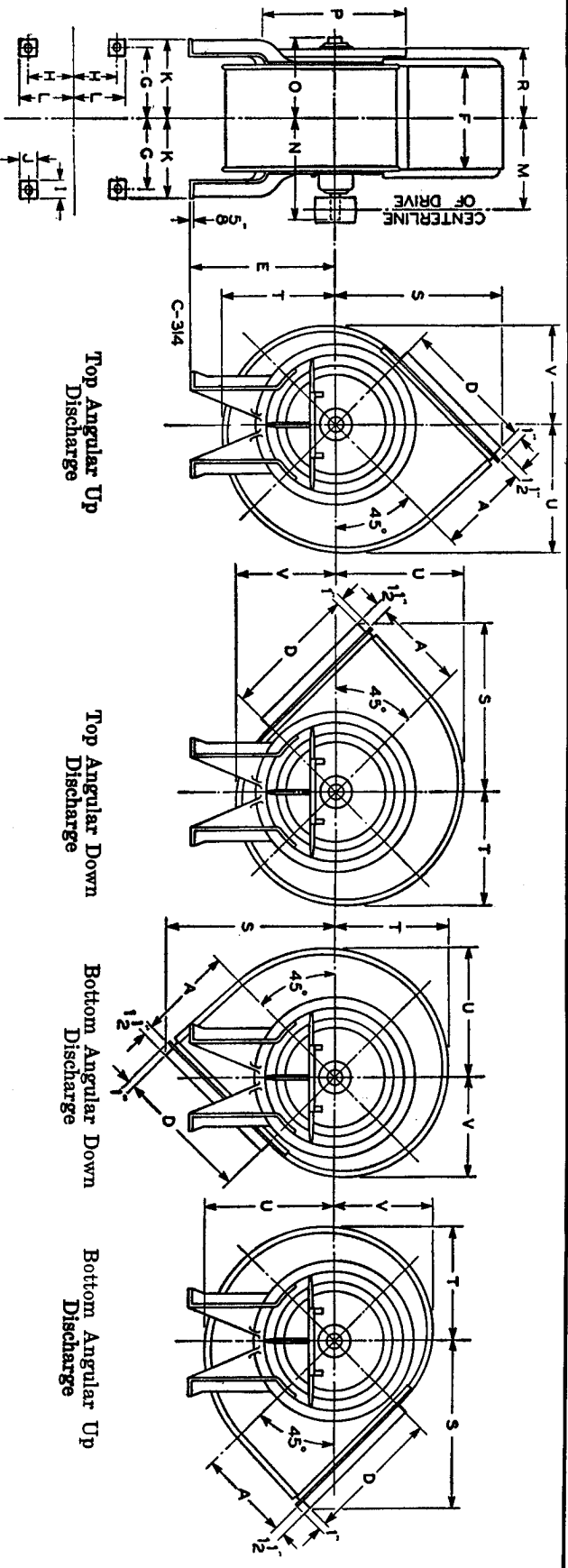
System		Type	Arr.	Rot.	Disch.	Width
Size	HV	3	CCW		S	
PURCH.						ORDER NO.
LOC.						F
USER						OUR ORDER NO.
LOC.						DATE
						DRAWN BY
						CERTIFIED BY



FAN SERVICES West Chicago, IL  
 INCORPORATED... USA

This print can be certified by home office only





Type HV Fans — Class ..... Arrangement 3 — Counterclockwise Rotation ..... Bearings

Size Fan	A	* D	E	* F	G	H	I	J	K	L	M	M	N	N	O	O	P	P	R	S	T	U	V	PULLEY		SHAFT EXTENSION		KEYWAY IN DRIVE HUB		Anchor Bolts			
																								Diam.	Face	Diam.	Sleeve Brg. Length	Ball Brg. Length	Width		Depth		
1 3/4	11 1/4	17 1/2	19	18 3/4	10 3/4	7	4 1/4	4 1/4	12 3/4	9 1/4	16 1/4	16 1/4	18 1/4	18 1/4	16 3/4	12	18	9 3/4	21 3/4	14 3/4	16 3/4	16 3/4	18 3/4	14 3/4	7	4 1/4	1 1/2	4 1/4	6 3/4	3/8	1/2	1/2	1/2
1 1/2	12 3/4	19 1/4	20 1/2	19 3/4	11 1/2	7 1/2	4 1/4	4 1/4	11 3/4	8 3/4	18 3/4	18 3/4	16 3/4	16 3/4	11 3/4	8 3/4	20 1/4	9 3/4	23 3/4	16 3/4	18 3/4	18 3/4	18 3/4	14 3/4	10	4 1/4	1 1/2	4 1/4	6 3/4	3/8	1/2	1/2	1/2
1 1/4	14 3/4	22 1/2	23 1/2	23 1/2	11 3/4	7 3/4	4 1/4	4 1/4	12 3/4	8 3/4	14 3/4	14 3/4	16 3/4	16 3/4	13 3/4	9 3/4	28 3/4	11 3/4	27 3/4	14 3/4	16 3/4	16 3/4	18 3/4	14 3/4	14	4 1/4	1 1/2	4 1/4	6 3/4	3/8	1/2	1/2	1/2
2	16 3/4	25 1/4	26 1/4	26 1/4	12 3/4	8 3/4	4 1/4	4 1/4	14 3/4	10 3/4	16 3/4	16 3/4	18 3/4	18 3/4	14 3/4	11 3/4	27	12 3/4	31 3/4	21 3/4	21 3/4	24 3/4	24 3/4	18 3/4	14	5 1/4	1 1/2	5 1/4	7 3/4	3/8	1/2	1/2	1/2
2 1/4	18 3/4	28 3/4	30	29 3/4	14 3/4	9 3/4	4 1/4	4 1/4	16 3/4	11 3/4	18 3/4	18 3/4	21 3/4	21 3/4	16 3/4	12 3/4	34	14 3/4	34 3/4	20 3/4	20 3/4	26 3/4	26 3/4	20 3/4	16	5 1/4	1 1/2	5 1/4	8	3/8	1/2	1/2	1/2
2 1/2	20 3/4	32	33	32 3/4	15 3/4	10 3/4	4 1/4	4 1/4	18 3/4	12 3/4	19 3/4	19 3/4	22 3/4	22 3/4	17 3/4	13 3/4	38 3/4	16 3/4	38 3/4	22 3/4	22 3/4	28 3/4	28 3/4	22 3/4	18	6 3/4	1 1/2	6 3/4	8 3/4	3/8	1/2	1/2	1/2
2 3/4	22 3/4	35 3/4	36 3/4	36 3/4	17 3/4	11 3/4	4 1/4	4 1/4	20 3/4	13 3/4	21 3/4	20 3/4	24 3/4	24 3/4	19 3/4	15 3/4	40 3/4	17 3/4	40 3/4	24 3/4	24 3/4	32 3/4	32 3/4	25 3/4	20	6 3/4	1 1/2	6 3/4	9	3/8	1/2	1/2	1/2
3	25 3/4	38 3/4	39 3/4	39 3/4	18 3/4	12 3/4	4 1/4	4 1/4	20 3/4	15 3/4	22 3/4	20 3/4	26 3/4	26 3/4	20 3/4	16 3/4	42 3/4	18 3/4	42 3/4	26 3/4	26 3/4	35 3/4	35 3/4	27 3/4	22	6 3/4	1 1/2	6 3/4	9	3/8	1/2	1/2	1/2

Inside diameter of Pipe to fit over Inlet.  
 \*Outlet dimensions are outside.  
 †Dimensions for Fans with Ball Bearings.  
 All dimensions in inches.

C F M \_\_\_\_\_  
 Temp \_\_\_\_\_  
 S P \_\_\_\_\_  
 R P M \_\_\_\_\_  
 B H P \_\_\_\_\_

System

Size	Type	Arr.	Rot.	Disch.	Width
	HV	3	CCW		S

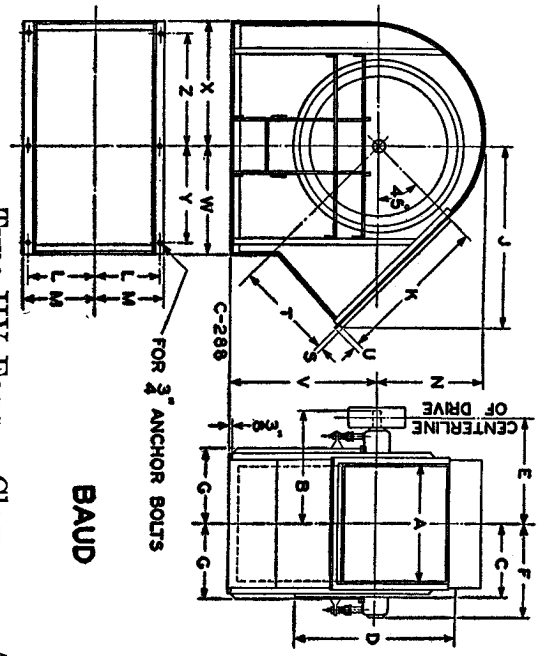
PURCH. \_\_\_\_\_ ORDER NO. \_\_\_\_\_  
 LOC. \_\_\_\_\_ F  
 USER \_\_\_\_\_ OUR ORDER NO. \_\_\_\_\_  
 LOC. \_\_\_\_\_ DATE \_\_\_\_\_  
 DRAWN BY \_\_\_\_\_  
 CERTIFIED BY \_\_\_\_\_



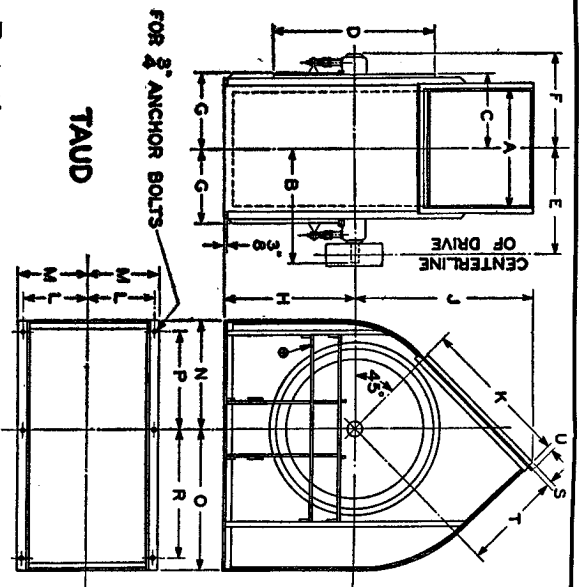
This print can be certified by home office only

DRG. No. F-14549B





**BAUD**



**TAUD**

Type HV Fans — Class ..... Arrangement 3 — Counterclockwise Rotation ..... Bearings

Size Fan	A	B	B†	C	D	E	E†	F	F†	G	H	J	K*	L	M	N	O	P	R	S	T	U	V	W	X	Y	Z
3 1/4	82 1/8	31 1/8	29	21	44 1/8	28 1/8	26	25 1/8	21	20 1/8	35 1/8	49 1/8	41 1/8	17 1/8	19	28 1/8	37 1/8	26	85	1 1/8	26 1/8	1 1/8	40	30 1/8	38 1/8	27 1/8	30 1/8
3 1/2	84 1/8	32 1/8	30 1/8	22 1/8	47 1/8	29 1/8	27 1/8	26 1/8	22 1/8	21 1/8	38 1/8	50 1/8	45 1/8	18 1/8	20 1/8	31 1/8	40 1/8	28	87 1/8	1 1/8	28 1/8	1 1/8	43	32 1/8	39 1/8	30 1/8	32 1/8
4	89 3/8	35 3/8	33 1/8	25 1/8	54 1/8	32 1/8	30 3/8	28 3/8	24 1/8	23 1/8	43 3/8	60 3/8	51 1/8	21 1/8	23 1/8	35 3/8	46 3/8	32	93 1/8	1 1/8	32 1/8	1 1/8	49 1/8	37 1/8	41	34 1/8	35 3/8
4 1/4	41 1/8	37 1/8	35 3/8	26 1/8	57 3/8	35 1/8	32 1/8	30 3/8	27 1/8	26 1/8	46 1/8	64 3/8	54 1/8	22 3/8	24 1/8	37 1/8	49 1/8	34 1/8	84 1/8	1 1/8	34 1/8	1 1/8	52	39 1/8	43 3/8	38 1/8	40 1/8
4 1/2	44 1/8	39 3/8	37 3/8	28 1/8	61	37 3/8	34 1/8	31 3/8	28 1/8	27 3/8	48 1/8	67 1/8	57 3/8	23 3/8	25 3/8	39 3/8	52 1/8	40 1/8	86 1/8	1 1/8	36 1/8	1 1/8	55	42 1/8	46 3/8	40 1/8	42 1/8
5	49 1/8	42 3/8	40 1/8	31	68	40 1/8	37 1/8	34 1/8	31	29 3/8	54 1/8	75 1/8	64	26 3/8	28 1/8	44 3/8	58 1/8	40 1/8	94 1/8	1 1/8	41 1/8	1 1/8	61 1/8	46 3/8	51 1/8	43 1/8	44 1/8
5 1/4	54 1/8	46 1/8	44 3/8	34 1/8	75	42 1/8	39 1/8	36 1/8	33 1/8	32 1/8	59 1/8	83 1/8	70 1/8	29 1/8	30 3/8	47 1/8	64 1/8	44 1/8	96 1/8	1 1/8	43 1/8	1 1/8	67	51 1/8	56 3/8	47 1/8	53 1/8
5 1/2	59	48 1/8	46 3/8	36 1/8	81 1/8	43 1/8	40 1/8	37 1/8	34 1/8	33 1/8	64 3/8	90 1/8	76 3/8	31 1/8	32 3/8	53 1/8	69 3/8	46 1/8	98 1/8	1 1/8	45 1/8	1 1/8	73	56 3/8	61 1/8	53 1/8	56 1/8
6 1/4	63 1/8	53 3/8	52 1/8	40 3/8	88 1/8	47 1/8	44 1/8	40 3/8	37 3/8	36 3/8	69 3/8	98	83 3/8	34 1/8	35 3/8	57 3/8	75 3/8	52 1/8	104 1/8	1 1/8	48 1/8	1 1/8	78 3/8	60 3/8	66 3/8	56 3/8	61 1/8
6 1/2	68 3/8	57 1/8	55 3/8	43 1/8	95	52 1/8	49 1/8	45 1/8	42 1/8	41 1/8	74 3/8	104 1/8	89 1/8	39 1/8	40 3/8	61 3/8	81 3/8	57 1/8	108 1/8	1 1/8	50 3/8	1 1/8	82 1/8	65 3/8	71 3/8	60 1/8	66 3/8
7 1/4	73 3/8	61 1/8	59 3/8	46 3/8	102	58 1/8	55 1/8	51 1/8	48 1/8	47 1/8	80	112 3/8	95 3/8	41 3/8	42 3/8	66 3/8	87 3/8	66	114 3/8	1 1/8	52 3/8	1 1/8	84 1/8	70 3/8	76 3/8	61 1/8	67 1/8
8	78 1/8	64 1/8	61 3/8	49 3/8	109	63 1/8	60 1/8	56 1/8	52 1/8	51 1/8	85	119 3/8	102 3/8	44 3/8	45 3/8	71	93 1/8	66	122 3/8	1 1/8	54 3/8	1 1/8	86 1/8	74 3/8	81 3/8	65 1/8	70 1/8
8 1/4	83 3/8	70 1/8	67 1/8	52 1/8	116	67 1/8	64 1/8	61 1/8	57 1/8	56 1/8	91 3/8	128 3/8	108 3/8	47 3/8	48 3/8	75 3/8	104 3/8	69 1/8	128 3/8	1 1/8	56 3/8	1 1/8	99	79 3/8	87 3/8	68 1/8	73 1/8
9	88 3/8	74 3/8	71 3/8	55 1/8	122	71 3/8	67 1/8	63 1/8	59 1/8	58 1/8	96 3/8	135 3/8	115	49 3/8	50 3/8	79 3/8	110 3/8	73 1/8	135 3/8	1 1/8	58 3/8	1 1/8	103	84 3/8	92 3/8	73 1/8	78 1/8

\*Arr. "C" same as Arr. "A" except Pulley is omitted.  
 †Inside diameter of Pipe to fit over Inlet.  
 ‡Outside dimensions are outside.  
 §Dimensions for Fans with ball bearings.  
 ¶Furnished on No. 8 Fans and larger.  
 All dimensions in inches.

Size Fan	PULLEY			KEYWAY IN DRIVE HUB			SHAFT EXTENSION		
	Diam.	Face	Width	Depth	Diam.	Sleeve Brg.	Ball Brg.	Length	Ball Brg.
3 1/4	24	6	1 1/2	1/2	2 1/8	6 1/4	8	8 1/4	8 1/4
3 1/2	28	7	1 3/4	3/4	2 1/8	6 3/4	8 1/4	8 1/4	8 1/4
4	36	8	2	1	2 1/8	7 1/4	8 1/4	8 1/4	8 1/4
4 1/4	40	8	2 1/4	1 1/4	2 1/8	7 3/4	8 1/4	8 1/4	8 1/4
4 1/2	48	8	2 1/2	1 1/2	2 1/8	8	8 1/4	8 1/4	8 1/4
5 1/4	54	8	2 3/4	1 3/4	2 1/8	8 3/4	8 1/4	8 1/4	8 1/4
5 1/2	62	10	3	2	2 1/8	9 1/4	8 1/4	8 1/4	8 1/4
6 1/4	68	10	3 1/4	2 1/4	2 1/8	10	8 1/4	8 1/4	8 1/4
7 1/4	74	12	4	2 3/4	2 1/8	11 1/4	8 1/4	8 1/4	8 1/4
8	80	12	4 1/4	3	2 1/8	11 3/4	8 1/4	8 1/4	8 1/4
8 1/4	86	14	4 1/2	3 1/4	2 1/8	12 1/4	8 1/4	8 1/4	8 1/4
9	92	16	4 3/4	3 1/2	2 1/8	12 3/4	8 1/4	8 1/4	8 1/4
9 1/4	98	18	5	3 3/4	2 1/8	13 1/4	8 1/4	8 1/4	8 1/4

DRG. No. F-12557B

System

Size	Type	Art.	Rot.	Disch.	Width
	HV	3	CCW		S

PURCH. LOC. \_\_\_\_\_

USER LOC. \_\_\_\_\_

LOC. \_\_\_\_\_

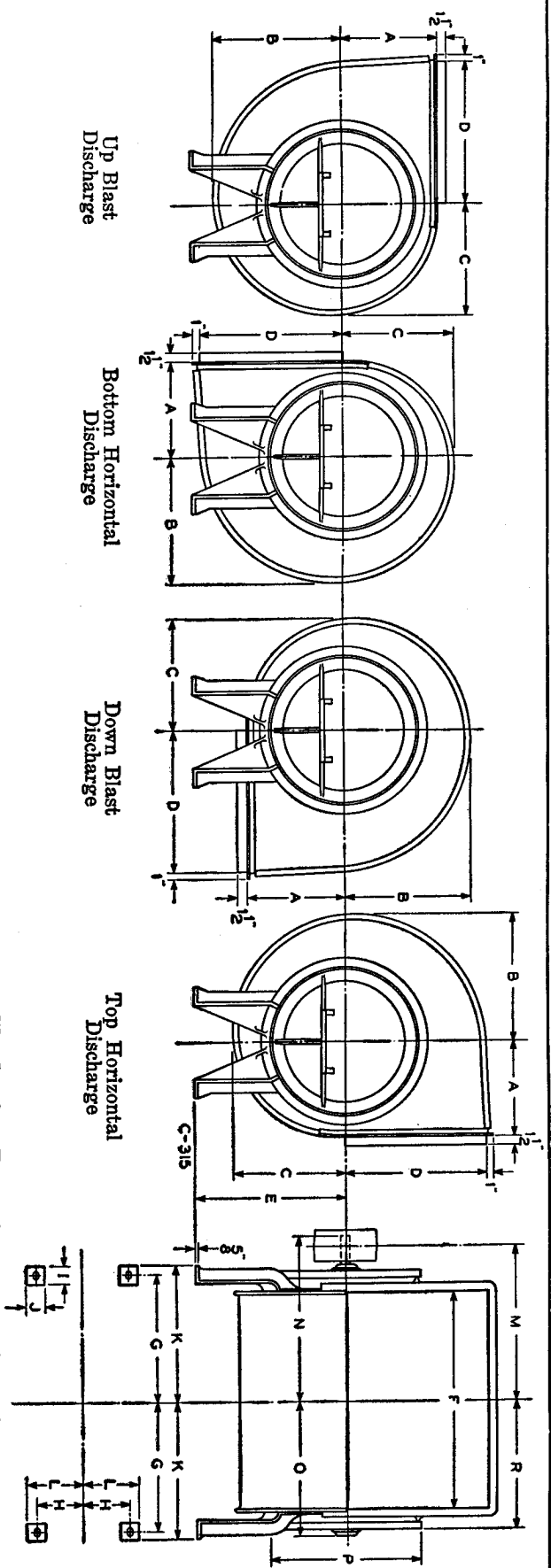
DATE \_\_\_\_\_

DRAWN BY \_\_\_\_\_

CERTIFIED BY \_\_\_\_\_

FAN SERVICES West Chicago, IL  
 INCORPORATED, USA

This print can be certified by home office only



Type HV FANS — Class ..... Arrangement A or C+ — DW-DI — Clockwise Rotation ..... Bearings

Size Fan	A	B	C	D	E	F	G	H	I	J	K	L	M	M	N	N	O	O	P	R	PULLEY		SHAFT EXTENSION			KEYWAY IN DRIVE HUB		Anchor Bolts	
																					Diarn.	Face	Diarn.	Sleeve Brg. Length	Ball Brg. Length	Width	Depth		
1 3/4	11 3/4	15 1/4	13 1/2	17 1/2	19	24 3/4	15 1/2	7 1/4	4 1/4	4 1/4	17 1/2	9 1/2	23	23	24 1/2	24 1/2	19 3/4	17 3/4	18	14 3/4	8	5	1 1/2	5	7 1/2	3/8	1/4	1/2	1/2
1 1/2	12 3/4	17 1/4	15 1/2	19 1/2	20 3/4	26 5/8	15 7/8	7 3/4	4 1/2	4 1/2	17 1/2	10	22 3/4	22 3/4	24 1/2	24 1/2	19 3/4	17 3/4	18 1/2	14 3/4	10	5	1 1/2	5 1/2	7 3/4	3/8	1/4	1/2	1/2
1 1/4	14 1/4	19 1/4	17 1/2	22 1/2	23 1/2	31	18 1/4	7 3/4	4 3/8	4 3/8	19 1/2	8 3/4	22 3/4	22 3/4	24 1/2	24 1/2	19 3/4	16 5/8	23 3/4	15 1/2	14	6	1 1/2	6	8 1/2	3/8	1/4	1/2	1/2
2 1/4	16 3/4	22 3/4	19 3/4	25 3/4	26 3/4	35 3/4	20 5/8	8 3/8	4 7/8	4 7/8	22 1/2	10 1/2	25 1/4	25 1/4	27 3/4	27 3/4	21 1/2	18 3/8	27	20 3/4	14	6	1 1/2	6	9 1/2	3/8	1/4	1/2	1/2
2 1/2	18 3/8	25 1/2	22 1/2	28 1/2	29 1/2	39 3/8	22 1/2	9 1/2	5 1/8	5 1/8	24 3/8	11 1/4	28 1/2	28 1/2	31 1/2	31 1/2	24 1/2	21 1/2	30 5/8	16	14	7	1 1/2	7	9 1/2	3/8	1/4	1/2	1/2
2 3/4	20 7/8	28 3/8	24 3/8	32	33	44 3/8	25 5/8	10 1/2	5 3/4	5 3/4	27 3/8	12 1/2	30 1/2	30 1/2	33 1/2	33 1/2	26 3/8	23 3/8	34	26	18	7	1 1/2	7	9 1/2	3/8	1/4	1/2	1/2
3	22 7/8	30 3/4	27	35 1/4	36 1/4	48 1/4	27 1/4	11 5/8	6 1/4	6 1/4	29 1/4	13 3/4	33 1/4	32 1/4	37 1/4	37 1/4	29 1/4	25 1/4	37 1/4	20	20	8	1 1/2	8	10 1/2	3/4	1/2	1/2	1/2

† Arr. "C" same as Arr. "A" except Pulley is omitted.  
 † Inside diameter of Pipe to fit over Inlet.  
 † Outlet dimensions are outside.  
 † Dimensions for Fans with Ball Bearings.  
 All dimensions in inches.

System

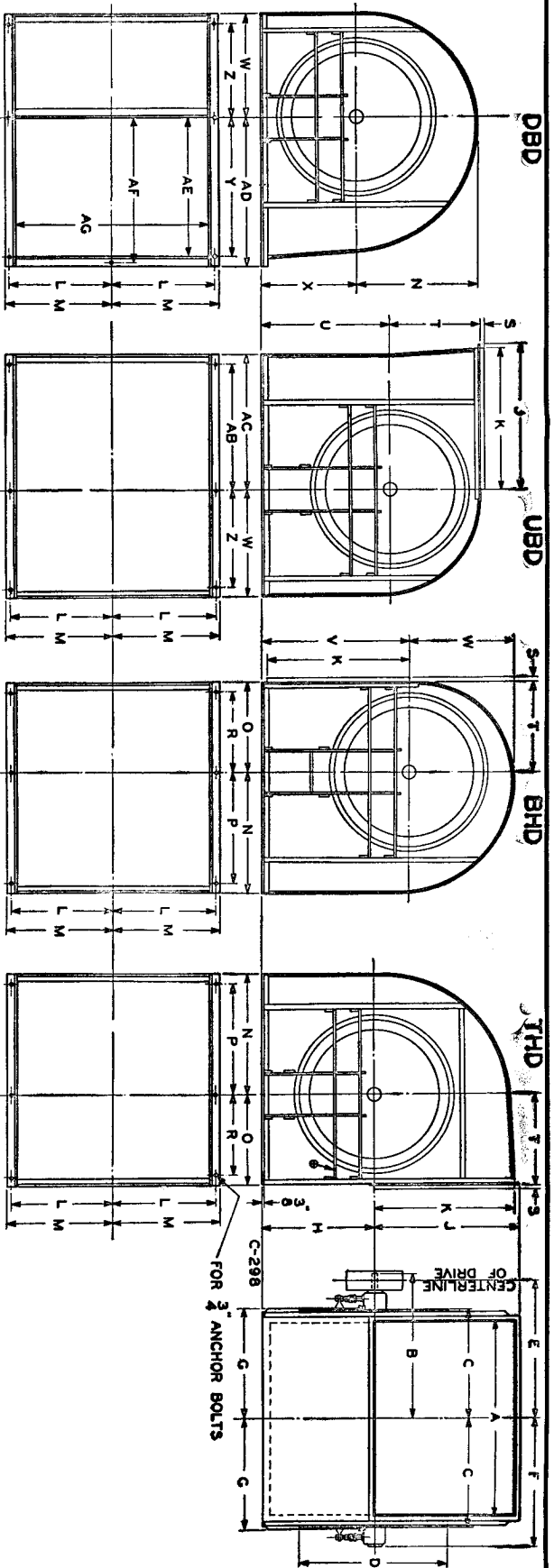
Size	Type	Arr.	Rot.	Disch.	Width
	HV		CR		D

C. F. M. \_\_\_\_\_  
 Temp. \_\_\_\_\_  
 S. P. \_\_\_\_\_  
 R. P. M. \_\_\_\_\_  
 B. H. P. \_\_\_\_\_

PURCH.	ORDER NO.
LOC.	F
USER	OUR ORDER NO.
LOC.	DATE
	DRAWN BY
	CERTIFIED BY

FAN SERVICES West Chicago, IL  
 INCORPORATED, USA

DRG. No. F-14228A



Type HV Fans — Class.....Arrangement A or C+ — DW-DI — Clockwise Rotation.....Bearings

Size Fan	A	B	B <sup>†</sup>	C	D <sup>†</sup>	E	E <sup>†</sup>	F	F <sup>†</sup>	G	H	J	K	L	M	N	O	P	R	S	T	U	V	W	X	Y	Z	AB	AC	AD	AE	AF	AG		
3 1/4	57 1/2	45 1/2	43 1/2	39 1/2	44 1/2	42 1/2	40 1/2	37 1/2	33 1/2	32 1/2	39 1/2	43 1/2	41 1/2	30 1/2	31 1/2	35 1/2	26 1/2	32 1/2	29 1/2	1 1/2	26 1/2	37 1/2	49 1/2	81 1/2	28 3/4	41 1/2	28	37	40	41 1/2	48	57 1/2			
3 3/4	61 1/2	47 1/2	45 1/2	35 1/2	47 1/2	44 1/2	42 1/2	40 1/2	35 1/2	35 1/2	41 1/2	46 1/2	45 1/2	32 1/2	33 1/2	38 1/2	28 1/2	34 1/2	25 1/2	1 1/2	28 1/2	40 1/2	53 1/2	83 1/2	30 3/4	43 1/2	30 3/4	43 1/2	44 1/2	51 1/2	58 1/2	61 1/2			
4	70 1/2	59 1/2	51 1/2	40 1/2	54 1/2	50	48	44 1/2	40 1/2	39 1/2	41	52 1/2	51 1/2	37 1/2	38 1/2	43 1/2	32 1/2	40 1/2	29 1/2	1 1/2	32 1/2	46 1/2	69 1/2	89 1/2	34 1/2	51	34 1/2	49 1/2	54 1/2	62 1/2	70 1/2	79 1/2			
4 1/4	79 3/4	65 3/4	57 3/4	45 3/4	61	55 1/2	53 1/2	49 3/4	46 3/4	44 3/4	45 3/4	65 3/4	64	41 3/4	43 1/2	49 3/4	38 3/4	45 3/4	38 3/4	1 1/2	36 3/4	52	80	92 1/2	38 3/4	57 1/2	43	57 1/2	60 3/4	67 1/2	75 1/2	81 1/2	87 1/2		
5	88 3/4	71 3/4	63 3/4	50 3/4	68	61 3/4	59 3/4	54 3/4	51 3/4	49 3/4	50 3/4	72 1/2	70 3/4	48 3/4	50 3/4	56 3/4	45	56 1/4	41	1 1/2	45 1/4	63 1/4	78	92 1/2	41 1/4	61 1/4	48	63 3/4	71 3/4	74 3/4	81 3/4	89 3/4	96 1/4	105 1/4	
5 1/4	97	77 1/2	69 1/2	55 1/2	75	67 1/2	65 1/2	59 1/2	56 1/2	54 1/2	55 1/2	75 1/2	73 1/2	50 1/2	52 1/2	58 1/2	47	58 1/2	45	1 1/2	47 1/2	65 1/2	81 1/2	95 1/2	44 1/2	64 1/2	51 1/2	67 1/2	74 3/4	80 3/4	87 3/4	95 3/4	103 3/4	111 3/4	
6	105 1/4	84 1/4	75 1/2	60 1/2	81 1/2	72 1/2	70 1/2	64 1/2	61 1/2	59 1/2	60 1/2	81 1/2	79 1/2	51 1/2	53 1/2	59 1/2	49	61 1/2	48	1 1/2	49 1/2	67 1/2	83 1/2	97 1/2	47 1/2	68 1/2	55 1/2	71 1/2	78 1/2	84 1/2	91 1/2	98 1/2	105 1/2	113 1/2	121 1/2
6 1/4	114 3/4	84 3/4	75 1/2	60 1/2	81 1/2	72 1/2	70 1/2	64 1/2	61 1/2	59 1/2	60 1/2	81 1/2	79 1/2	51 1/2	53 1/2	59 1/2	49	61 1/2	48	1 1/2	49 1/2	67 1/2	83 1/2	97 1/2	47 1/2	68 1/2	55 1/2	71 1/2	78 1/2	84 1/2	91 1/2	98 1/2	105 1/2	113 1/2	121 1/2
7	123 1/2	90	81 1/2	65 1/2	86 1/2	77 1/2	75 1/2	68 1/2	65 1/2	63 1/2	64 1/2	86 1/2	84 1/2	52 1/2	54 1/2	60 1/2	50	62 1/2	49	1 1/2	50 1/2	68 1/2	84 1/2	98 1/2	48 1/2	69 1/2	56 1/2	72 1/2	79 1/2	85 1/2	92 1/2	99 1/2	106 1/2	114 1/2	122 1/2
7 1/4	132 3/4	98 3/4	89 3/4	70 3/4	95	84 3/4	82 3/4	70 3/4	71	69	70	91 3/4	89 1/4	53 1/4	55 1/4	61 1/4	51	63 1/4	50	1 1/2	51 1/4	69 1/4	85 1/4	99 1/4	49 1/4	70 1/4	57 1/4	73 1/4	80 1/4	87 1/4	94 1/4	101 1/4	108 1/4	115 1/4	122 1/4
8	141	106 1/2	95 3/4	75 3/4	102	89 3/4	87 3/4	70 3/4	71 1/2	69 1/2	75	97 1/2	95 1/2	54 1/2	56 1/2	62 1/2	52 1/2	64 1/2	51	1 1/2	52 1/2	70 1/2	86 1/2	100 1/2	50 1/2	71 1/2	58 1/2	74 1/2	81 1/2	88 1/2	95 1/2	102 1/2	109 1/2	116 1/2	123 1/2
8 1/4	149 3/4	112 3/4	103 3/4	80 3/4	116	97 3/4	95 3/4	71 3/4	71 3/4	69 3/4	77 1/2	99 1/2	97 1/2	55 1/2	57 1/2	63 1/2	53 1/2	65 1/2	52 1/2	1 1/2	53 1/2	71 1/2	87 1/2	101 1/2	51 1/2	72 1/2	59 1/2	75 1/2	82 1/2	89 1/2	96 1/2	103 1/2	110 1/2	117 1/2	124 1/2
9	158 3/4	118 3/4	108 3/4	80 3/4	122	106	104 3/4	71 3/4	71 3/4	69 3/4	77 1/2	99 1/2	97 1/2	55 1/2	57 1/2	63 1/2	53 1/2	65 1/2	52 1/2	1 1/2	53 1/2	71 1/2	87 1/2	101 1/2	51 1/2	72 1/2	59 1/2	75 1/2	82 1/2	89 1/2	96 1/2	103 1/2	110 1/2	117 1/2	124 1/2

† Arr. "C" same as Arr. "A" except Pulley is omitted.  
 † Inside diameter of Tube to fit over Inlet.  
 \* Outlet dimensions for Fans with Ball Bearings.  
 † Dimensions for Fans with Ball Bearings.  
 † Furnished on No. 8 Fans and larger.  
 All dimensions in inches.

C F M \_\_\_\_\_  
 Temp. \_\_\_\_\_  
 S P \_\_\_\_\_  
 R P M \_\_\_\_\_  
 B H P \_\_\_\_\_

Size Fan	PULLEY			KEYWAY IN DRIVE HUB			SHAFT EXTENSION LENGTH			
	Diam.	Face	Width	Depth	Diam.	Sleeve Brg.	Ball Brg.	Diam.	Sleeve Brg.	Ball Brg.
3 1/4	24	8	1 1/2	1 1/4	2 1/2	7 1/4	9 3/4	9 3/4	7 1/4	9 3/4
3 3/4	28	10	1 1/2	1 1/4	2 3/4	7 1/2	9	9 1/2	7 1/2	9 1/2
4	36	10	1 1/2	1 1/4	3	7 1/2	9	9 1/2	7 1/2	9 1/2
4 1/4	42	12	1 1/2	1 1/4	3 1/4	7 1/2	9 3/4	9 3/4	7 1/2	9 3/4
5	48	12	1 1/2	1 1/4	3 1/2	7 1/2	11	11 1/2	7 1/2	11 1/2
5 1/4	54	14	1 1/2	1 1/4	3 3/4	7 1/2	11 1/2	11 1/2	7 1/2	11 1/2
6	62	16	1 1/2	1 1/4	4	7 1/2	14	14 1/2	7 1/2	14 1/2
6 1/4	68	16	1 1/2	1 1/4	4 1/4	7 1/2	14 1/2	15 1/2	7 1/2	15 1/2
7	74	18	1 1/2	1 1/4	4 1/2	7 1/2	15 1/2	16 1/2	7 1/2	16 1/2
7 1/4	80	18	1 1/2	1 1/4	4 3/4	7 1/2	15 1/2	17 1/2	7 1/2	17 1/2
8	88	22	1 1/2	1 1/4	5	7 1/2	18	18 1/2	7 1/2	18 1/2
8 1/4	92	24	1 1/2	1 1/4	5 1/4	7 1/2	20	21	7 1/2	21
9	98	26	1 1/2	1 1/4	5 1/2	7 1/2	21	22 3/4	7 1/2	22 3/4

DRG. No. F-13291A

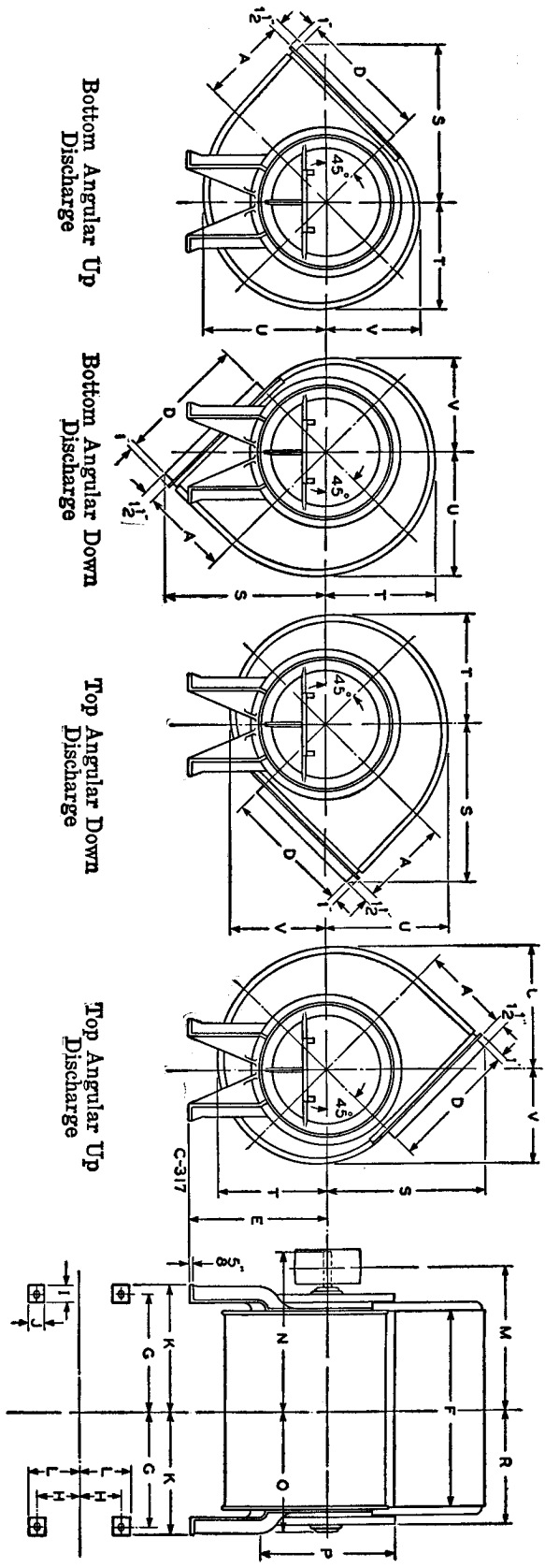
System

Size	Type	Arr.	Rot.	Disch.	Width
	HV		CR		D
PURCH.					ORDER NO.
LOC.					F
USER					OUR ORDER NO.
LOC.					DATE
					DRAWN BY
					CHECKED BY



FAN SERVICES INCORPORATED  
 West Chicago, IL  
 USA

This print can be certified by home office only



Type HV FANS — Class ..... Arrangement A or C+ — DW-DI — Clockwise Rotation ..... Bearings

Size Fan	A	D	E	F	G	H	I	J	K	L	M	M	N	N	O	O	P	R	S	T	U	V	PULLEY		SHAFT EXTENSION			KEYWAY IN DRIVE HUB		Anchor Bolts
																							Diam.	Face	Diam.	Sleeve Dr. Length	Ball Dr. Length	Width	Depth	
1 3/8	11 3/4	17 3/4	19	24 3/8	15 3/8	7	4 1/4	4 1/4	17 3/4	9 1/4	23	23 3/4	24 3/8	24 3/8	19 7/8	17 3/4	18	14 3/8	21 7/8	14 3/8	16 3/8	18 3/8	12 3/8	8	5	5	1 3/4	1 3/4	3/8	1 3/8
1 1/2	12 3/4	19 3/4	20 3/4	25 3/8	15 3/4	7 1/4	4 1/4	4 1/4	17 3/4	9 1/4	23 1/4	23 3/4	24 3/8	24 3/8	19 7/8	17 3/4	18 1/4	14 3/8	21 7/8	14 3/8	16 3/8	18 3/8	12 3/8	8	5	5	1 3/4	1 3/4	3/8	1 3/8
2	16 3/4	25 3/4	26 3/4	35 3/4	20 3/4	8 3/4	5 1/4	5 1/4	22 1/4	10 3/4	25 1/4	25 3/4	27 1/4	27 1/4	21 3/4	18 3/4	20 3/4	16 3/8	23 3/8	16 3/8	18 3/8	20 3/8	13 3/8	10	6	6	1 3/4	1 3/4	3/8	1 3/8
2 1/4	18 3/4	28 3/4	30	39 3/4	23 3/4	9 3/4	5 3/4	5 3/4	24 3/4	11 3/4	28 3/4	29 3/4	31 3/4	31 3/4	22 3/4	20 3/4	22 3/4	18 3/8	26 3/8	18 3/8	20 3/8	22 3/8	14 3/8	10	6	6	1 3/4	1 3/4	3/8	1 3/8
2 1/2	20 3/4	32	33	44 3/4	25 3/4	10 3/4	6 1/4	6 1/4	27 3/4	12 3/4	30 3/4	31 3/4	33 3/4	33 3/4	23 3/4	21 3/4	23 3/4	18 3/8	28 3/8	18 3/8	20 3/8	22 3/8	14 3/8	10	6	6	1 3/4	1 3/4	3/8	1 3/8
3	22 3/4	35 3/4	36 3/4	48 3/4	27 3/4	11 3/4	6 3/4	6 3/4	29 3/4	13 3/4	33 3/4	34 3/4	37 3/4	37 3/4	24 3/4	22 3/4	24 3/4	18 3/8	31 3/8	18 3/8	20 3/8	22 3/8	14 3/8	10	6	6	1 3/4	1 3/4	3/8	1 3/8
	25	38 3/4	39 3/4	52 3/4	30 3/4	12 3/4	7 1/4	7 1/4	32 1/4	15 3/4	35 3/4	36 3/4	38 3/4	38 3/4	25 3/4	23 3/4	25 3/4	18 3/8	34 3/8	18 3/8	20 3/8	22 3/8	14 3/8	10	6	6	1 3/4	1 3/4	3/8	1 3/8

† Arr. "C" same as Arr. "A" except Pulley is omitted.  
 ‡ Inside diameter of Pipe to fit over Inlet.  
 \* Outlet dimensions are outside.  
 †† Dimensions for Fans with Ball Bearings.  
 All dimensions in inches.

C. F. M. \_\_\_\_\_  
 Temp. \_\_\_\_\_  
 S. P. \_\_\_\_\_  
 R. P. M. \_\_\_\_\_  
 B. H. P. \_\_\_\_\_

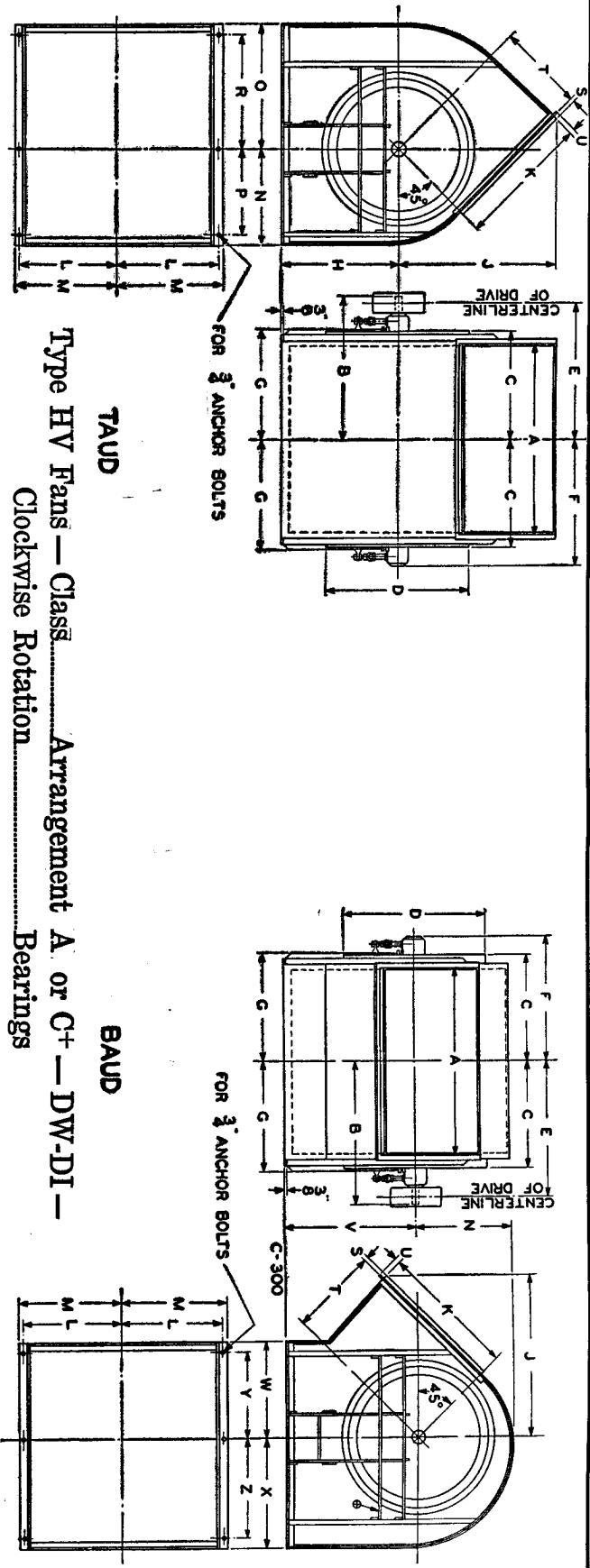
DRG. No. F-14228B

Size	Type	Arr.	Rot.	Disch.	Width
	HV		CR		D
PURCH.					ORDER NO.
LOC.					F
USER					OUR ORDER NO.
LOC.					DATE
DRAWN BY					
CERTIFIED BY					



**FAN SERVICES** West Chicago, IL  
**INCORPORATED** USA

This print can be certified by home office only



**Type HV Fans — Class..... Arrangement A or C+ — DW-DI —**  
**Clockwise Rotation..... Bearings**

Size Fan	A	B	† B	C	‡ D	E	‡ E	F	† F	G	H	J	* K	L	M	N	O	P	R	S	T	U	V	W	X	Y	Z
3 1/2	57 1/2	45 1/2	43 1/2	33 1/2	44	49 1/2	40 3/8	37 1/2	33 1/2	32 1/2	35 1/2	49 1/2	41 3/4	30 1/2	31 1/2	28 1/2	26	35	1 1/2	26 3/8	1 1/2	40	30 1/2	33 1/2	27 1/2	30 1/2	
4	61 1/2	47 1/2	45 1/2	35 1/2	44 1/2	49 1/2	40 3/8	37 1/2	33 1/2	32 1/2	35 1/2	49 1/2	41 3/4	30 1/2	31 1/2	28 1/2	26	35	1 1/2	26 3/8	1 1/2	40	30 1/2	33 1/2	27 1/2	30 1/2	
5 1/2	79 3/8	59 3/8	57 1/2	45 1/2	61	67 1/2	51 1/8	46 1/2	40 1/2	39 1/2	43 1/2	67 1/2	57 1/4	40 1/2	43 1/2	39 3/8	32	49	1 1/2	32 1/2	1 1/2	43	32 1/2	41	34	33 1/2	
6 1/2	97	71 1/2	69 1/2	50 1/2	68	75	63 1/2	50 1/2	45 1/2	44 1/2	53 1/2	75	64	43	46 1/2	42 1/2	32	60	1 1/2	33 1/2	1 1/2	43	32 1/2	41	34	33 1/2	
7 1/2	106 3/4	77 1/2	75 1/2	55 1/2	75	81 1/2	70 1/2	55 1/2	50 1/2	49 1/2	59 1/2	81 1/2	70 1/2	46 1/2	49 1/2	45 1/2	32	68	1 1/2	34 1/2	1 1/2	43	32 1/2	41	34	33 1/2	
8	123 1/2	90	88 1/2	60 1/2	82	88 1/2	77 1/2	60 1/2	55 1/2	54 1/2	64 1/2	88 1/2	76 1/2	48 1/2	52 1/2	47 1/2	32	73	1 1/2	35 1/2	1 1/2	43	32 1/2	41	34	33 1/2	
8 1/2	141	106 1/2	103 1/2	65 1/2	88 1/2	95	83 1/2	65 1/2	60 1/2	59 1/2	69 1/2	95	83 1/2	49 1/2	52 1/2	47 1/2	32	78	1 1/2	36 1/2	1 1/2	43	32 1/2	41	34	33 1/2	
9	149 1/2	112 1/2	109 1/2	70 1/2	95	102	88 1/2	71 1/2	65 1/2	64 1/2	74 3/4	104 1/2	89 1/2	50 1/2	52 1/2	47 1/2	32	82	1 1/2	37 1/2	1 1/2	43	32 1/2	41	34	33 1/2	
9 1/2	183 1/2	118 1/2	115 1/2	75 1/2	102	109	89 1/2	76 1/2	70 1/2	69 1/2	80	112 1/2	95 1/2	50 1/2	52 1/2	47 1/2	32	88	1 1/2	38 1/2	1 1/2	43	32 1/2	41	34	33 1/2	
9 3/4	183 1/2	118 1/2	115 1/2	75 1/2	102	109	89 1/2	76 1/2	70 1/2	69 1/2	80	112 1/2	95 1/2	50 1/2	52 1/2	47 1/2	32	88	1 1/2	38 1/2	1 1/2	43	32 1/2	41	34	33 1/2	

† Arr. "C" same as Arr. "A" except Pulley is omitted.  
 ‡ Inside diameter of Type to fit over inlet.  
 † Outside dimensions are outside.  
 ‡ Dimensions for Fans with Ball Bearings.  
 † Furnished on No. 8 Fans and larger.  
 All dimensions in inches.

C F M \_\_\_\_\_  
 Temp \_\_\_\_\_  
 S P \_\_\_\_\_  
 R P M \_\_\_\_\_  
 B H P \_\_\_\_\_

Size Fan	PULLEY			KEYWAY IN DRIVE HUB			SHAFT EXTENSION		
	Diam.	Face	Width	Depth	Diam.	Sleeve Brg.	Ball Brg.	Length	Ball Brg.
3 1/2	24	8	1/2	1/2	2 3/8	7 1/2	9 3/4	11	9 3/4
4	26	10	3/4	3/4	2 1/2	9	11	11 1/2	9 3/4
4 1/2	28	10	3/4	3/4	2 3/8	9 1/4	11 1/4	11 1/4	11 1/4
5	36	12	1	1	3 1/8	11	13 1/2	13 1/2	11 1/4
5 1/2	42	12	1 1/4	1 1/4	3 1/2	11 1/4	14 1/4	14 1/4	13 1/4
6 1/2	48	14	1 1/2	1 1/2	3 3/4	12 1/2	15 1/2	15 1/2	13 1/4
6 3/4	54	14	1 1/2	1 1/2	3 3/4	12 1/2	15 1/2	15 1/2	13 1/4
7 1/2	62	16	1 3/4	1 3/4	4 1/8	14	16 3/4	16 3/4	15 1/4
7 3/4	68	16	1 3/4	1 3/4	4 1/8	14	16 3/4	16 3/4	15 1/4
8	74	18	1 3/4	1 3/4	4 1/8	15 1/4	17 1/4	17 1/4	15 1/4
8 1/2	80	20	1 3/4	1 3/4	4 1/8	15 1/4	17 1/4	17 1/4	15 1/4
9	86	22	1 3/4	1 3/4	4 1/8	15 1/4	17 1/4	17 1/4	15 1/4
9 1/2	92	24	1 3/4	1 3/4	4 1/8	15 1/4	17 1/4	17 1/4	15 1/4
9 3/4	98	26	1 3/4	1 3/4	4 1/8	15 1/4	17 1/4	17 1/4	15 1/4

DRG. No. F-13291B

System

Size	Type	Arr.	Rot.	Disch.	Width
	HV		CR		D
PURCH.					
LOC.					
USER					
LOC.					
ORDER NO.					
F					
OUR ORDER NO.					
DATE					
DRAWN BY					
CERTIFIED BY					



This print can be certified by home office only